


LOC/DME I-OOS <b>111.55</b> Chan <b>52 (Y)</b>	APP CRS <b>095°</b>	Rwy Idg TDZE Apt Elev <b>5000</b> <b>39</b> <b>55</b>
------------------------------------------------------	------------------------	----------------------------------------------------------------------

# ILS or LOC RWY 9R

ORLANDO SANFORD INTL (SF'B)

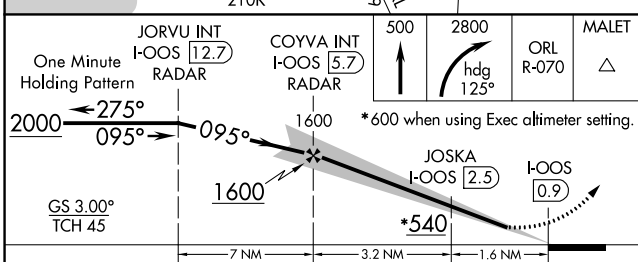
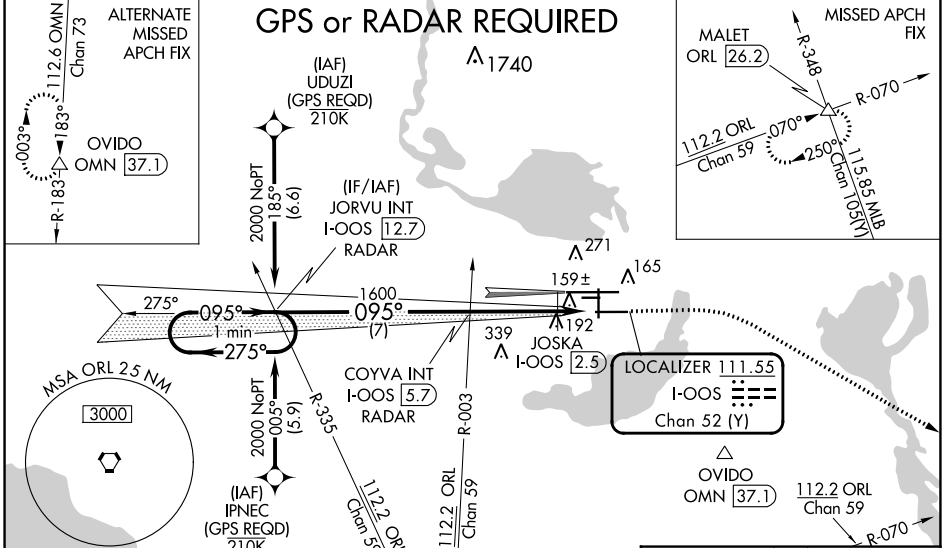
**⚠** When local altimeter setting not received, use Exec altimeter setting and increase S-ILS DA to 282, and all MDA 60 feet; increase S-LOC 9R Cat C, D visibility ¼ mile, Circling Cat C visibility ½ mile and JOSKA Fix Minimums S-LOC 9R Cats C, D visibility ¼ mile. Simultaneous approach authorized with Rwy 9L. Night landing: Rwy 27C NA.

**MALSR**



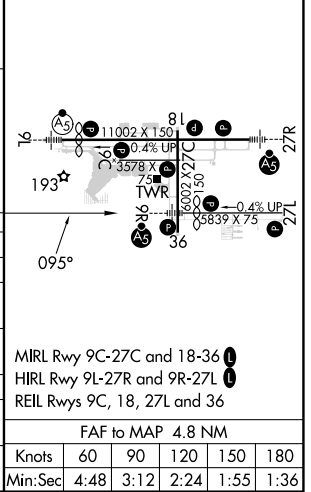
**MISSED APPROACH:** Climb to 500 then climbing right turn to 2800 on heading 125° and ORL VORTAC R-070 to MALET INT/ORL 26.2 DME and hold.

ATIS <b>125.975</b>	ORLANDO APP CON <b>135.3 351.9</b> (NORTH) <b>119.775 351.9</b> (SOUTH)	SANFORD TOWER* <b>120.3</b> (CTAF) <b>0 254.35</b>	GND CON <b>121.35 254.35</b>	CLNC DEL <b>123.975</b>	CLNC DEL <b>121.35</b> (When twr closed)
------------------------	-------------------------------------------------------------------------------	-------------------------------------------------------	---------------------------------	----------------------------	------------------------------------------------



ELEV 55	<b>D</b> TDZE 39
---------	------------------

CATEGORY	A	B	C	D
S-ILS 9R	239-½		200 (200-½)	
S-LOC 9R	540-½	501 (500-½)	540-1	501 (500-1)
<b>C</b> CIRCLING	580-1	525 (600-1)	600-1½ 545 (600-1½)	640-2 585 (600-2)
JOSKA FIX MINIMUMS (DME REQUIRED)				
S-LOC 9R	440-½	401 (400-½)	440-¾	401 (400-¾)
<b>C</b> CIRCLING	580-1	525 (600-1)	600-1½ 545 (600-1½)	640-2 585 (600-2)



SE-3, 28 NOV 2024 to 26 DEC 2024

SE-3, 28 NOV 2024 to 26 DEC 2024