

ILS Z or LOC/DME Z RWY 13R

LOC/DME I-NQI 110.9 Chan 46	APCH CRS 130°	Rwy Ildg TDZE Arprt Elev 8000 50 50
---	-------------------------	---

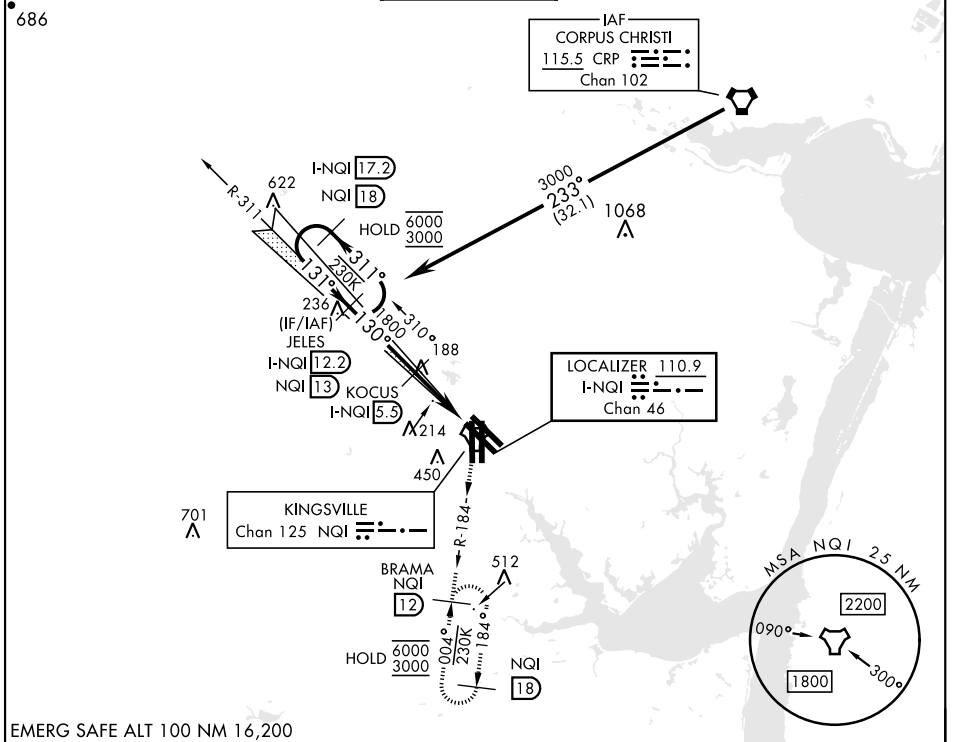
AL-918 [USN]

KINGSVILLE NAS (KNQI)

TACAN required.

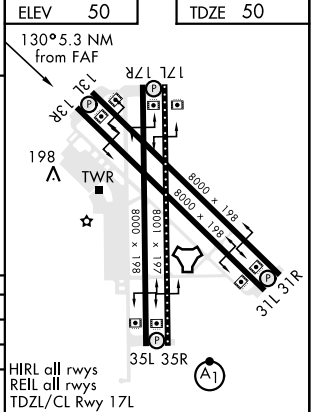
MISSED APPROACH: Climbing right turn to 3000 and intercept NQI TACAN R-184 to BRAMA and hold.

ATIS ★ 282.25	APP CON 119.9 290.45	TOWER ★ 124.1 377.05	GND CON 239.05	CLNC DEL 328.4	ASR/ PAR
-------------------------	--------------------------------	--------------------------------	--------------------------	--------------------------	-------------



EMERG SAFE ALT 100 NM 16,200

JELES I-NQI 17.2 NQI 18 I-NQI 12.2 NQI 13 KOCUS I-NQI 5.9 PEXIE I-NQI 1.3 PEXIE I-NQI 0.7 LOC DME BRAMA NQI 12 R-184 HOLD 6000 3000		VGSi and ILS glidepath not coincident (VGSi TCH 34). 3000 NQI R-184	ELEV 50 TDZE 50 130° 5.3 NM from FAF	
CATEGORY S-ILS 13R S-LOC 13R CIRCLING	A 460-1 540-1	B 250-¾ 410 (500-1) 490 (500-1)	C 200 (200-¾) 460-1½ 760-2 710 (800-2)	D 410 (500-1½) 760-2¼ 710 (800-2¼)



ILS Z or LOC/DME Z RWY 13R

SC-3, 28 NOV 2024 to 26 DEC 2024

SC-3, 28 NOV 2024 to 26 DEC 2024