

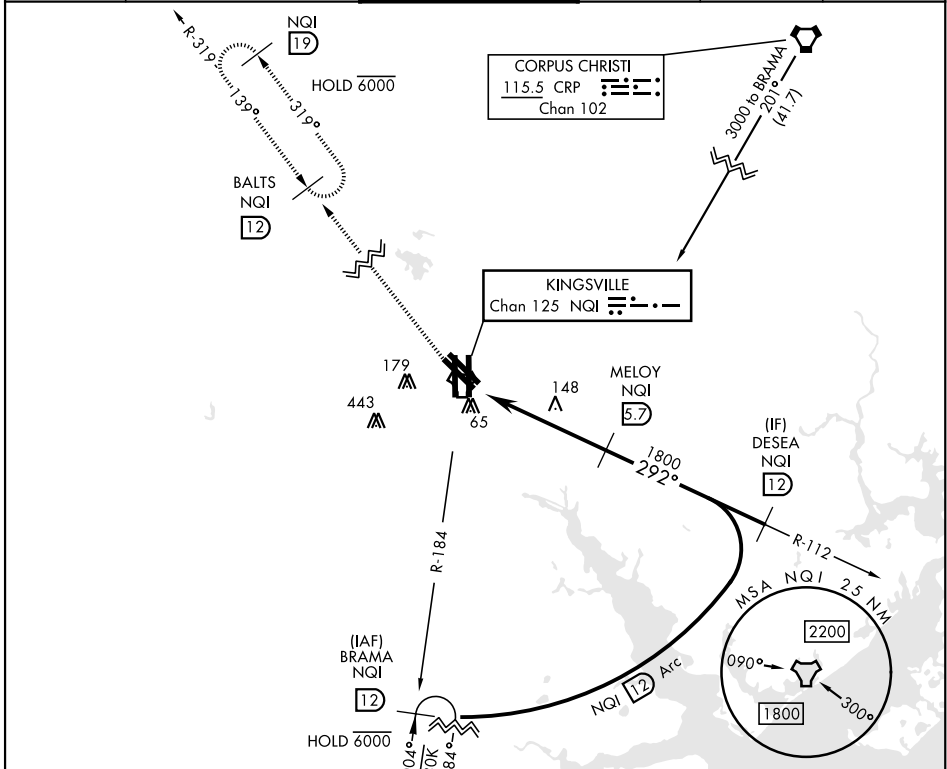
TACAN RWY 31L/R

TACAN NQI Chan 125	APCH CRS 292°	Rwy 31L Idg 8000 TDZE 47 Arprt Elev 50	Rwy 31R Idg 8000 TDZE 44 Arprt Elev 50
-----------------------	------------------	--	--

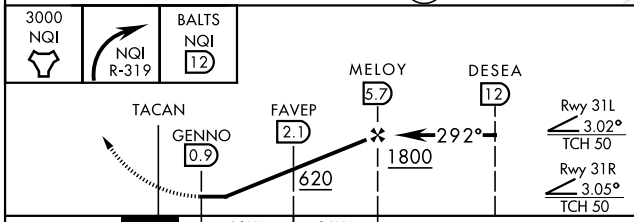
AL-918 [USN] KINGSVILLE NAS (KNQI)

MISSED APPROACH: Climb to 3000 direct NQI TACAN and climbing right turn to intercept NQI R-319 to BALTS and hold.

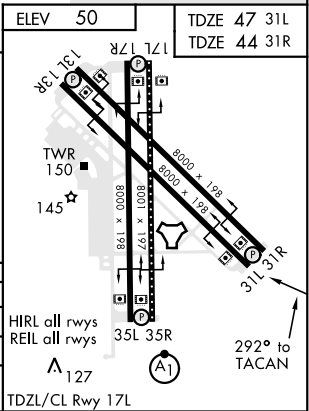
ATIS ★ 282.25	APP CON 119.9 290.45	TOWER ★ 124.1 377.05	GND CON 239.05	CLNC DEL 328.4	ASR/PAR
------------------	-------------------------	-------------------------	-------------------	-------------------	---------



EMERG SAFE ALT 100 NM 16,200



CATEGORY	A	B	C	D
S-31L		380-1	333 (400-1)	
S-31R		380-1	336 (400-1)	
CIRCLING	540-1 490 (500-1)		760-2 710 (800-2)	760-2½ 710 (800-2½)



KINGSVILLE, TEXAS
Amdt 1 05NOV20

27°30'N-97°49'W

KINGSVILLE NAS (KNQI)

TACAN RWY 31L/R

SC-3, 28 NOV 2024 to 26 DEC 2024

SC-3, 28 NOV 2024 to 26 DEC 2024