

TACAN Y RWY 17R

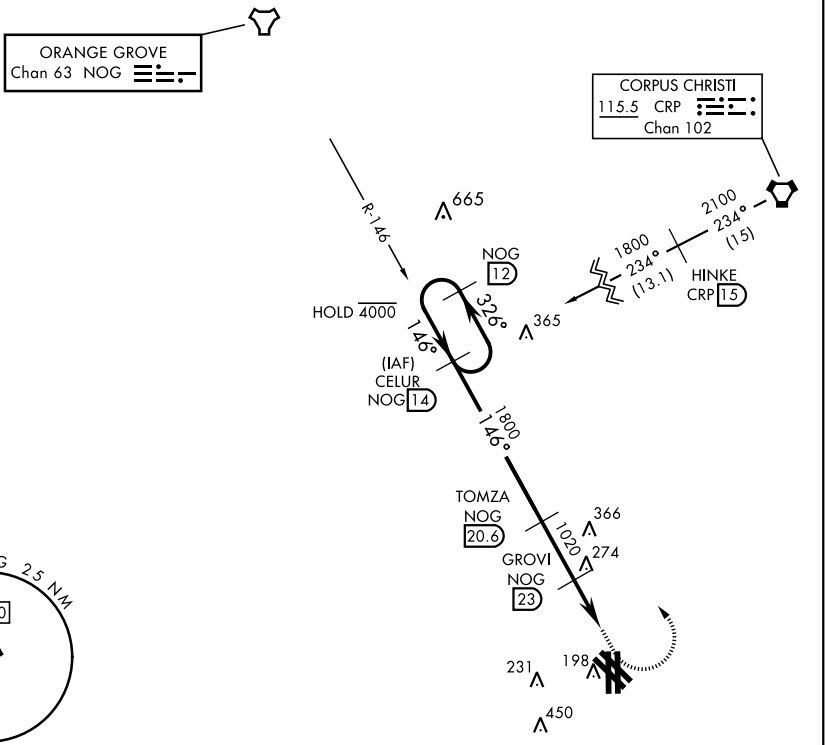
TACAN Chan 63	NOG	APCH CRS 146°	Rwy Idg TDZE Arprt Elev 8000 50 50
-------------------------	-----	-------------------------	--

AL-918 [USN]

KINGSVILLE NAS (KNQI)

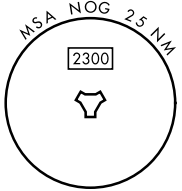
MISSED APPROACH: Climbing left turn to 1800, intercept NOG TACAN R-146 to CELUR and hold.

ATIS ★ 282.25	APP CON 119.9 290.45	TOWER ★ 124.1 377.05	GND CON 239.05	CLNC DEL 328.4	ASR/PAR
-------------------------	--------------------------------	--------------------------------	--------------------------	--------------------------	---------

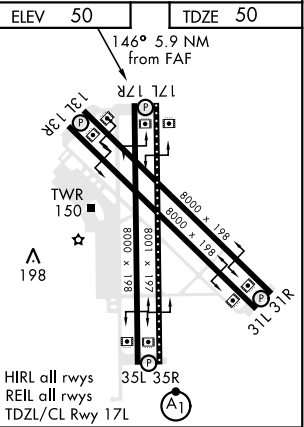
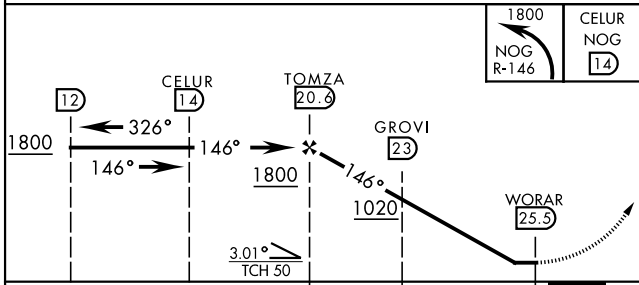


ORANGE GROVE
Chan 63 NOG

CORPUS CHRISTI
115.5 CRP
Chan 102



EMERG SAFE ALT 100 NM 16,200



CATEGORY	A	B	C	D
S-17R	560-1 511 (600-1)	560-13 511 (600-13)	760-2 710 (800-2)	760-2 710 (800-2)
CIRCLING	560-1 510 (600-1)			

HIRL all rwys
REIL all rwys
TDZL/CL Rwy 17L

TACAN Y RWY 17R

SC-3, 28 NOV 2024 to 26 DEC 2024

SC-3, 28 NOV 2024 to 26 DEC 2024