

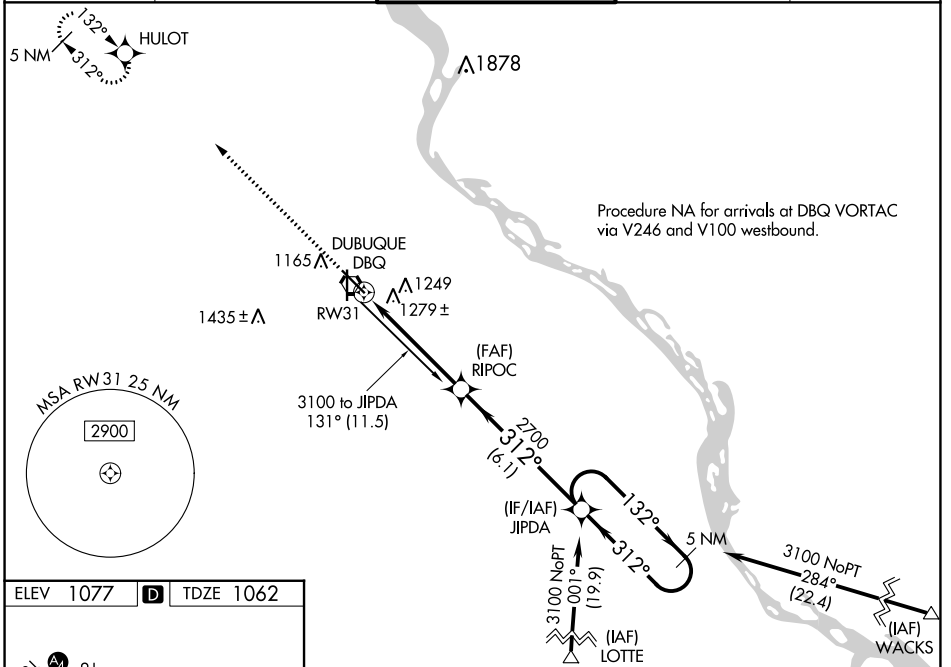
WAAS CH <b>69400</b> <b>W31A</b>	APP CRS <b>312°</b>	Rwy Idg <b>6502</b> TDZE <b>1062</b> Apt Elev <b>1077</b>
--	------------------------	---

# RNAV (GPS) RWY 31

DUBUQUE RGNL (DBQ)

RNP APCH - GPS.		MALSRL	MISSED APPROACH: Climb to 2800 direct HULOT and hold.
<p>▼ For inop ALS, increase LPV all Cats visibility to 1½ SM and LNAV Cats A and B visibility to 1 SM. Baro-VNAV NA when using Monticello altimeter setting. For uncompensated Baro-VNAV systems, LNAV/VNAV NA below -17°C or above 46°C. VDP NA when using Monticello altimeter setting. If local altimeter setting not received, use Monticello altimeter setting and increase all DAs/MDAs 100 feet.</p>			

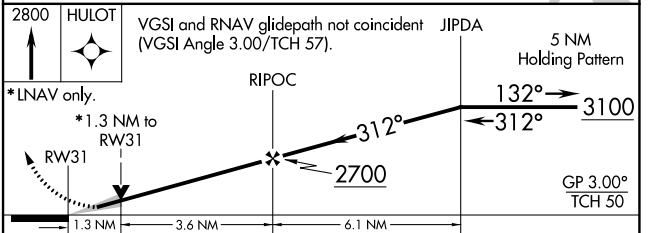
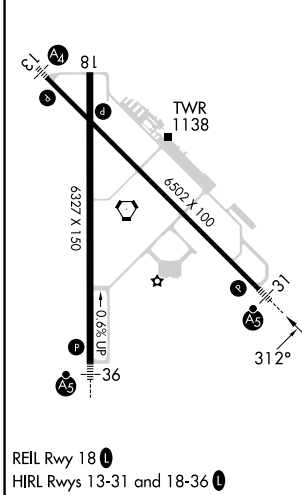
ATIS <b>127.25</b>	CHICAGO CENTER <b>133.95 281.4</b>	DUBUQUE TOWER* <b>119.5 (CTAF) 0 254.4</b>	GND CON <b>121.8</b>	UNICOM <b>122.95</b>
-----------------------	---------------------------------------	---	-------------------------	-------------------------



NC-3, 28 NOV 2024 to 26 DEC 2024

NC-3, 28 NOV 2024 to 26 DEC 2024

ELEV 1077	<b>D</b>	TDZE 1062
-----------	----------	-----------



CATEGORY	A	B	C	D
LPV DA	1481-1 419 (500-1)			
LNAV/ VNAV DA	1603-1½ 541 (600-1½)			
LNAV MDA	1540-¾ 478 (500-¾)		1540-1 478 (500-1)	
<b>C</b> CIRCLING	1620-2 543 (600-2)		1800-2¼ 723 (800-2¼)	