

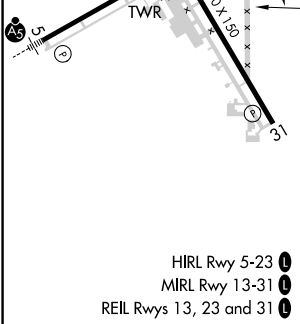
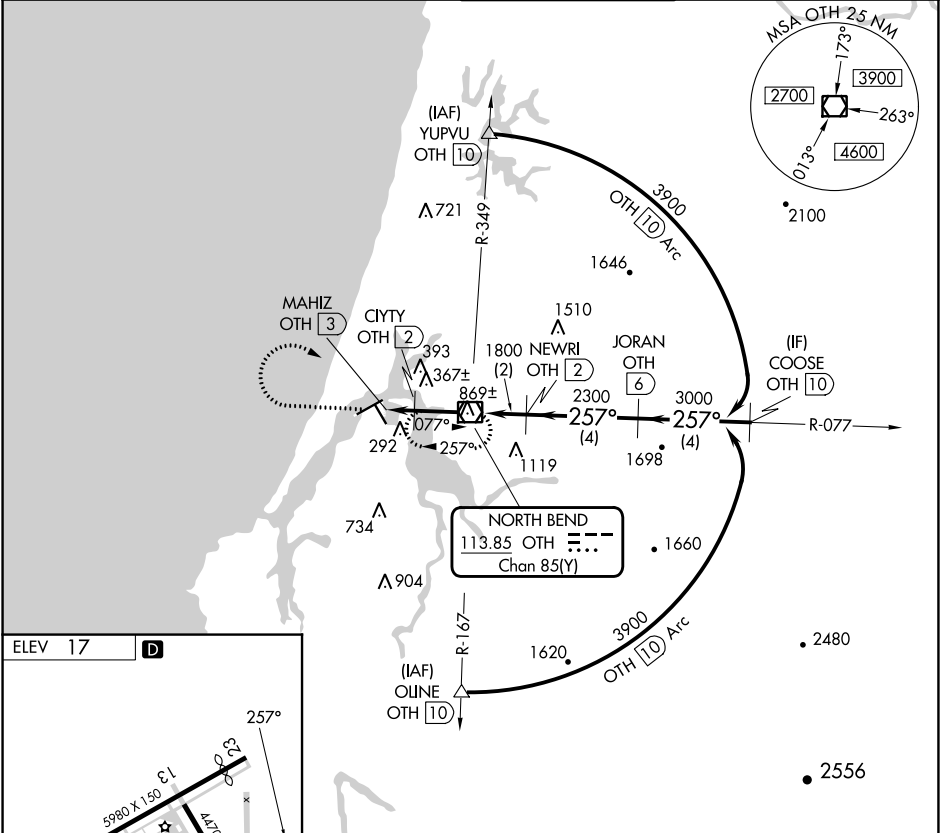
VOR/DME OTH 113.85 Chan 85(Y)	APP CRS 257°	Rwy Idg TDZE Apt Elev 17	N/A N/A 17
---	------------------------	--	---------------------------------------

VOR-B
SOUTHWEST OREGON RGNL (OTH)

DME required.
 ⚠ Circling Rwy 13, 31 NA at night.
 ⚠ Rwy 13, 31 helicopter visibility reduction below 1 SM NA.

MISSED APPROACH: Climb to 2300 then climbing right turn to 3600 direct OTH VOR/DME and hold.

AWOS-3PT 135.075	SEATTLE CENTER 127.55 254.35	NORTH BEND TOWER* 118.45 (CTAF) 0	GND CON 127.1
----------------------------	--	---	-------------------------



2300	3600	OTH	COOSE OTH (10)
NEWRI OTH (2)	JORAN OTH (6)	3900	
CITY OTH (2)	OTH VOR/DME	3000	
MAHIZ OTH (3)	1800	2300	
1060	1800	2300	
1 NM	2 NM	2 NM	4 NM
CATEGORY	A	B	C
700-1	820-1	1100-3	1180-3
683 (700-1)	803 (900-1)	1083 (1100-3)	1163 (1200-3)
<input checked="" type="checkbox"/> CIRCLING			

NW-1, 28 NOV 2024 to 26 DEC 2024

NW-1, 28 NOV 2024 to 26 DEC 2024