

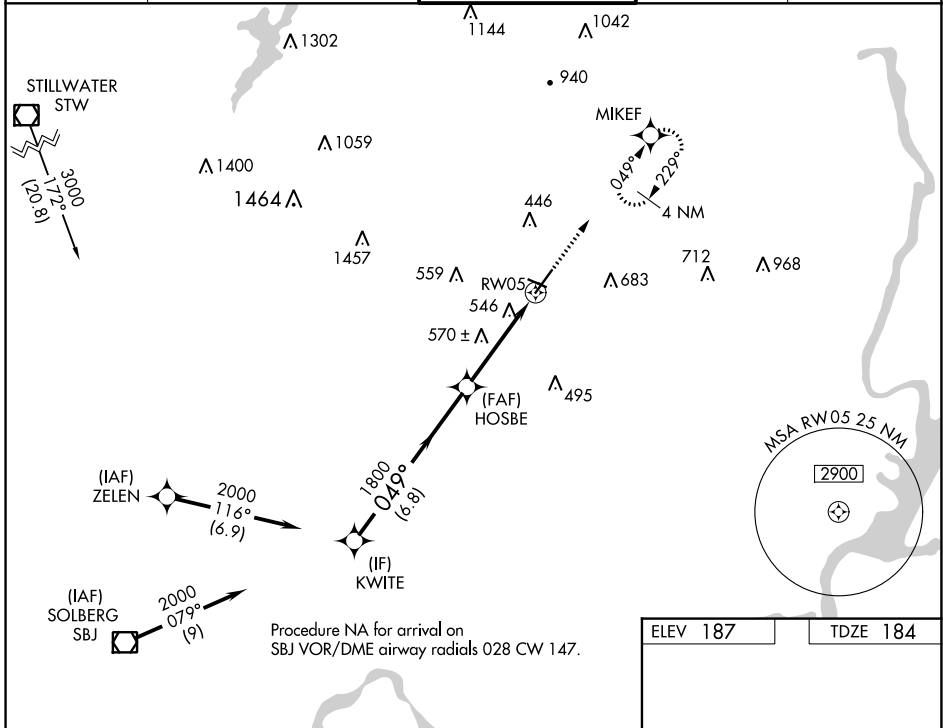
WAAS CH 97720 W05A	APP CRS 049°	Rwy Idg 5998 TDZE 184 Apt Elev 187
----------------------------------------	------------------------	---------------------------------------------------------------

RNAV (GPS) RWY 5

MORRISTOWN MUNI (MMU)

RNP APCH.	MISSED APPROACH: Climb to 2500 direct MIKEF and hold, continue climb-in-hold to 2500.
<p>▼ Rwy 5 helicopter visibility reduction below 3/4 SM NA.</p> <p>▲ For uncompensated Baro-VNAV systems, procedure NA below -15°C or above 46°C. Circling Rwy 13, 31 NA at night.</p>	

ATIS 124.25	NEWARK APP CON 127.6 379.9	MORRISTOWN TOWER* 118.1 (CTAF) 353.9	GND CON 134.2	CLNC DEL 128.6
-----------------------	--------------------------------------	-------------------------------------------------------	-------------------------	--------------------------



NE-2, 28 NOV 2024 to 26 DEC 2024

NE-2, 28 NOV 2024 to 26 DEC 2024

	KWITE		HOSBE		RW05		MIKEF	
	2000		1800		1800		2500	
	GP 3.50°		049°		*1.7 NM to RW05		*LNAV only.	
	TCH 59		1800		RW05			
	6.8 NM		2.5 NM		1.7 NM			
CATEGORY	A		B		C		D	
LPV DA			879-2		695 (700-2)			
LNAV/VNAV DA			893-2		709 (800-2)			
LNAV MDA	880-1		696 (700-1)		880-2		696 (700-2)	
CIRCLING	880-1 693 (700-1)		900-1 713 (800-1)		1000-2½ 813 (900-2½)		1200-3 1013 (1100-3)	

