

APP CRS	Rwy Idg	5998
229°	TDZE	183
	Apt Elev	187

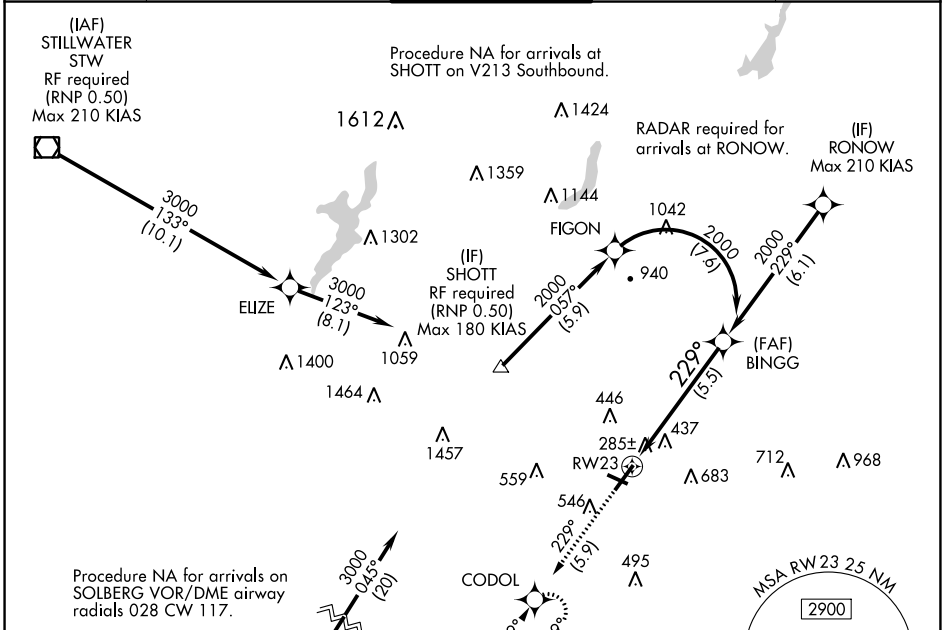
RNAV (RNP) Y RWY 23

MORRISTOWN MUNI (MMU)

For uncompensated Baro-VNAV systems, procedure NA below -15°C (5°F) or above 48°C (118°F). When local altimeter setting not received, procedure NA. GPS required. For inoperative MALSRL, increase RNP 0.11 all Cats visibility to 1¼ mile and RNP 0.30 all Cats visibility to 2 miles. Visibility reduction by helicopters NA.

MALSRL MISSED APPROACH: Climb to 2000 on track 229° to CODOL and hold.

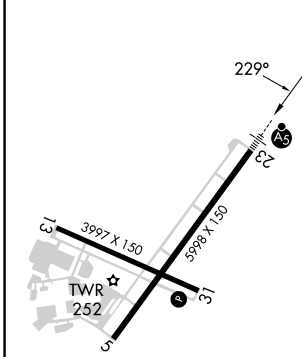
ATIS 124.25	NEWARK APP CON 127.6 379.9	MORRISTOWN TOWER* 118.1 (CTAF) 353.9	GND CON 134.2	CLNC DEL 128.6
-----------------------	--------------------------------------	--	-------------------------	--------------------------



NE-2, 28 NOV 2024 to 26 DEC 2024

NE-2, 28 NOV 2024 to 26 DEC 2024

ELEV 187	TDZE 183
----------	----------



3000 123° (8.1)	3000 133° (10.1)	2000 229° (5.9)	2000 229° (7.8)	2000 229° (6.1)	2000 229° (5.5)	2000 229° (5.9)
ELEV 187		TDZE 183				
(IAF) SOLBERG SBJ		RF required (RNP 0.50)		Max 210 KIAS		
3000 045° (20)		3000 123° (8.1)		3000 133° (10.1)		2000 229° (5.9)
2000		↑ tr 229°		CODOL		See planview for multiple IF locations.
BINGG		2000		2000		2000
229°		2000		2000		2000
5.5 NM		GP 3.00°		TCH 55		

CATEGORY	A	B	C	D
RNP 0.11 DA	553-¾ 370 (400-¾)			
RNP 0.30 DA	788-1½ 605 (700-1½)			

AUTHORIZATION REQUIRED