

APOLLO THREE DEPARTURE

OCEANA NAS (APOLLO SOUCEK FLD) (KNTU)

AL-934 [USN]

VIRGINIA BEACH, VIRGINIA

ATIS 317.6
 CLNC DEL
 254.4
 GND CON
 119.6 336.4
 TOWER
 127.075 360.2
 OCEANA APP/DEP CON
 123.9 266.8

LOCAL USE ONLY

Rwy	Knots	60	120	180	240	300	360
23L (A)	V/V(fpm)	805	1610	2415	3220	4025	4830
23R (A)	V/V(fpm)	683	1366	2049	2732	3415	4098
32L/R(B)	V/V(fpm)	280	560	840	1120	1400	1680

ATC Climb Rate

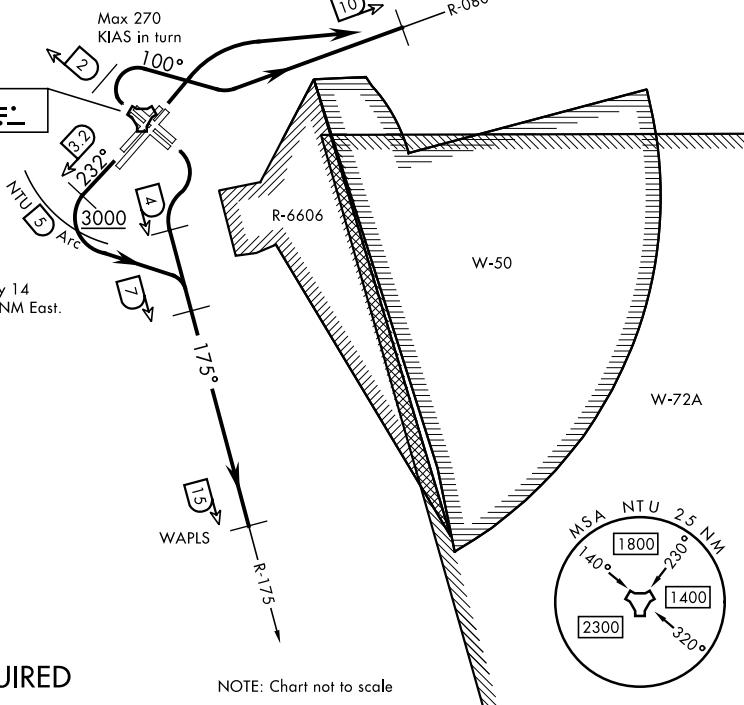
- (A) to 3000
- (B) to 460

CAUTION: Departures from Rwy 32 must avoid Norfolk airspace 3.5 NM West.

299

OCEANA
 Chan 113 NTU

CAUTION: Turns off Rwy 14 must avoid R-6606 3.5 NM East.



TACAN REQUIRED

NOTE: Chart not to scale



DEPARTURE ROUTE DESCRIPTION

TAKEOFF RWY 5L/R: Climbing right turn to intercept NTU TACAN R-080 to HHOBB.

TAKEOFF RWY 14L/R: Climbing right turn to intercept NTU TACAN R-175 no later than 4 DME to WAPLS.

TAKEOFF RWY 23L/R: Climb via heading 232°, crossing NTU TACAN 3.2 DME turn left to intercept NTU R-175 no later than 7 DME to WAPLS. Cross NTU 5 DME Arc at or above 3000.

TAKEOFF RWY 32L/R: Climbing right turn heading 100° within NTU TACAN 2 DME, intercept NTU R-080 to HHOBB. Do not exceed 270 KIAS on initial turn.

...Thence maintain 4000 or ATC assigned altitude.

APOLLO THREE DEPARTURE

Orig 19MAY22

VIRGINIA BEACH, VIRGINIA
 OCEANA NAS (APOLLO SOUCEK FLD) (KNTU)

NE-3, 28 NOV 2024 to 26 DEC 2024

NE-3, 28 NOV 2024 to 26 DEC 2024