

WYNNS-FOUR DEPARTURE (WYNNS4•WYNNS)

OCEANA NAS (APOLLO SOUCEK FLD) (KNTU)

VIRGINIA BEACH, VIRGINIA

ATIS 317.6
 CLNC DEL
 254.4
 GND CON
 119.6 336.4
 TOWER
 127.075 360.2
 DEP CON
 123.9 266.8

AL-934 [USN]

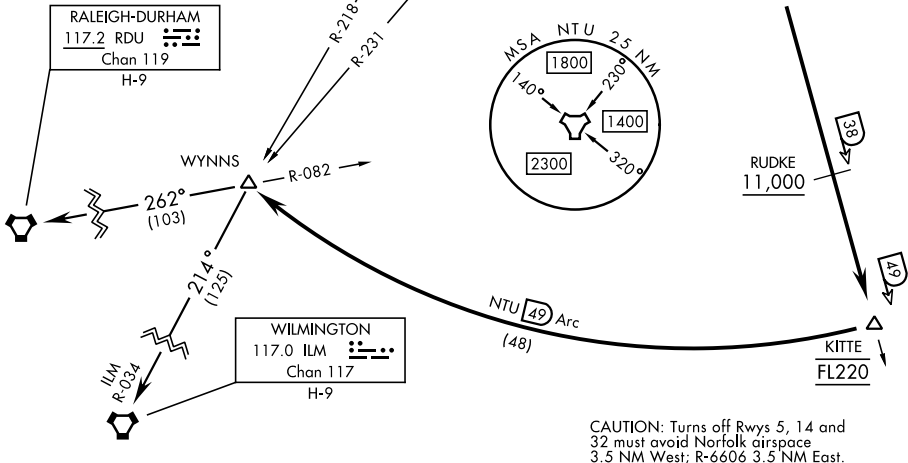
NORFOLK
 116.9 ORF
 Chan 116

OCEANA
 Chan 113 NTU

Rwy	Knots	60	120	180	240	300	360
All	V/V(fpm)	500	1000	1500	2000	2500	3000

ATC Minimum Climb Rate to FL220

NTU TACAN REQUIRED



CAUTION: Turns off Rws 5, 14 and 32 must avoid Norfolk airspace 3.5 NM West; R-6606 3.5 NM East.

NE-3, 28 NOV 2024 to 26 DEC 2024

NE-3, 28 NOV 2024 to 26 DEC 2024

DEPARTURE ROUTE DESCRIPTION

TAKEOFF RWY 5L/R or 14L/R: Climbing right turn to intercept NTU TACAN R-175 to CANOB. Thence...

TAKEOFF RWY 23L/R: Climbing left turn to intercept NTU TACAN R-175 to CANOB. Thence...

TAKEOFF RWY 32L/R: Climbing left turn within NTU TACAN 2 DME to intercept NTU R-175. Thence...

...via NTU R-175 to KITTE, arc south of NTU via the 49 mile arc to WYNNS. Cross RUDKE at or above 11,000. Cross KITTE at FL220, or as assigned. Thence...

RALEIGH-DURHAM TRANSITION (WYNNS4-RDU): ...via RDU VORTAC R-082 to RDU.

WILMINGTON TRANSITION (WYNNS4-ILM): ...via ILM VORTAC R-034 to ILM.

WYNNS-FOUR DEPARTURE (WYNNS4•WYNNS)

VIRGINIA BEACH, VIRGINIA

OCEANA NAS (APOLLO SOUCEK FLD) (KNTU)