

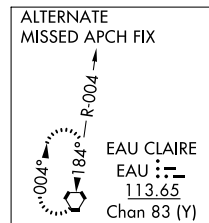
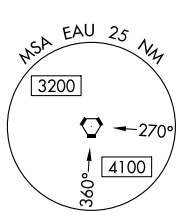
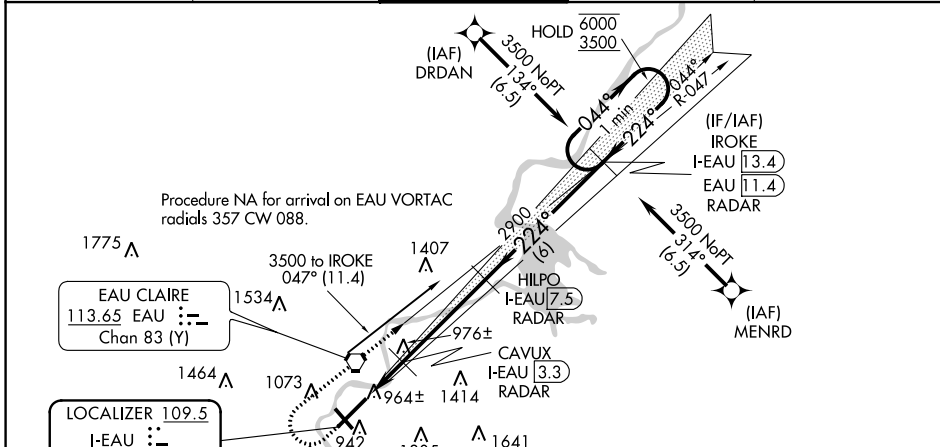
LOC/DME I-EAU 109.5 Chan 32	APP CRS 224°	Rwy Idg 7301 TDZE 913 Apt Elev 913
---	------------------------	---

ILS or LOC RWY 22

CHIPPEWA VALLEY RGNL (EAU)

From DRDAN and MENRD RNAV-1 GPS required. DME or RADAR required.	MALSR AS	MISSED APPROACH: Climb to 1600 then climbing right turn to 3500 on EAU VORTAC R-047 to IROKE/I-EAU LOC/DME 13.4 DME/RADAR and hold.
<p>▼ For inop ALS increase S-LOC 22 Cat C and D visibility to 7/8 SM. For inop ALS when using Rice Lake altimeter setting, increase S-ILS 22 all Cats visibility to 1 SM. When local altimeter setting not received, use Rice Lake altimeter setting and increase DA 110 feet and all MDA 120 feet, increase S-LOC 22 Cat C and D and Circling Cat C visibility 1/4 SM. VDP NA when using Rice Lake altimeter setting.</p>		

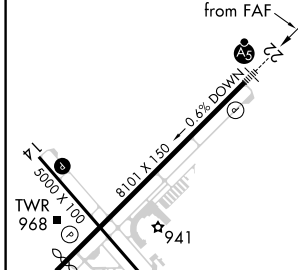
ATIS 126.025	MINNEAPOLIS CENTER 125.3 335.6	EAU CLAIRE TOWER ★ 118.575 (CTAF) 0	GND CON 120.925	UNICOM 122.95
------------------------	--	---	---------------------------	-------------------------



EC-3, 28 NOV 2024 to 26 DEC 2024

EC-3, 28 NOV 2024 to 26 DEC 2024

ELEV 913	D	TDZE 913
HIRL Rwy 4-22		
MIRL Rwy 14-32		
REIL Rwy 4 and 14		
224° 6.1 NM from FAF		



FAF to MAP 6.1 NM				
Knots	60	90	120	150
Min:Sec	6:06	4:04	3:03	2:26
2:02				
CIRCLING	1480-1 567 (600-1)	1540-1 627 (700-1)	1660-2 1/4 747 (800-2 1/4)	2200-3 1287 (1300-3)