

LOC/DME I-REE	APP CRS	Rwy ldg	7302
111.35	316°	TDZE	806
Chan 50 (Y)		Apt Elev	808

ILS or LOC RWY 32

SOUTHERN WISCONSIN RGNL (JVL)

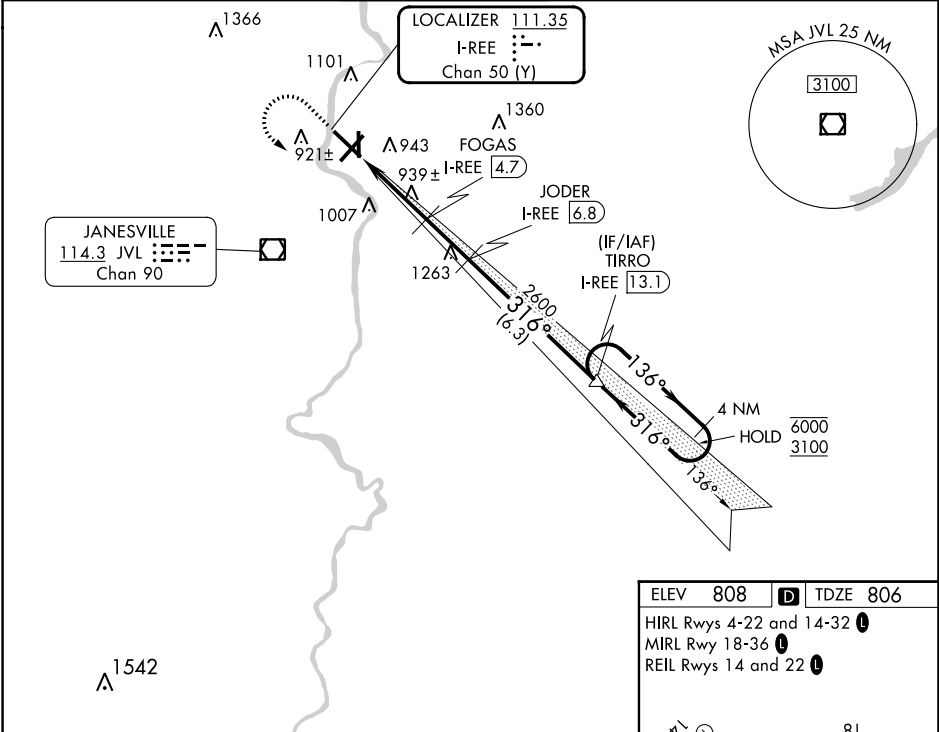
DME required. RNP APCH - GPS.

⚠ Circling Rwy 18 NA at night. When local altimeter setting not received, use Chicago/Rockford Intl altimeter setting and increase DA to 1075, increase all MDA 80 feet. Increase S-LOC 32 Cats C and D visibility 3/8 SM, and Circling Cats C/D 1/4 SM. VDP NA when using Chicago/Rockford Intl altimeter setting. For inop ALS when using Chicago/Rockford Intl altimeter setting, increase S-ILS 32 visibility all Cats to 3/8 SM and S-LOC 32 visibility Cats C/D to 1 3/8 SM.

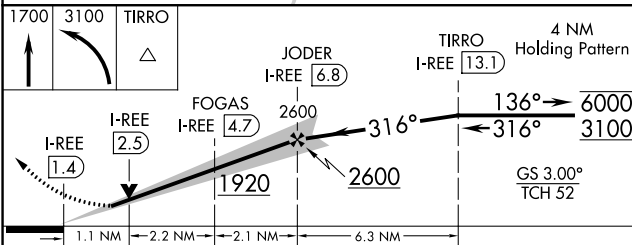


MISSED APPROACH: Climb to 1700 then climbing left turn to 3100 direct TIRRO and hold.

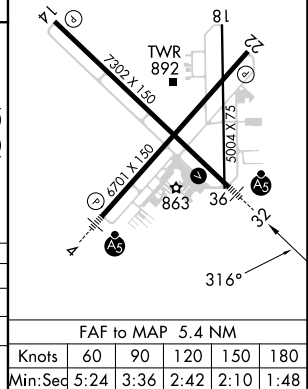
ATIS	ROCKFORD APP CON	JANESVILLE TOWER*	GND CON	CLNC DEL	UNICOM
128.25	121.0 327.0	118.8(CTAF) 0 225.4	121.65	121.65	122.95



ELEV	808	TDZE	806
HIRL Rwy	4-22 and 14-32		
MIRL Rwy	18-36		
REIL Rwy	14 and 22		



CATEGORY	A	B	C	D
S-ILS 32	1006-1/2 200 (200-1/2)			
S-LOC 32	1200-1/2	394 (400-1/2)	1200-3/8	394 (400-3/8)
C CIRCLING	1260-1 452 (500-1)	1320-1 512 (600-1)	1420-1 3/4 612 (700-1 3/4)	1460-2 652 (700-2)



EC-3, 28 NOV 2024 to 26 DEC 2024

EC-3, 28 NOV 2024 to 26 DEC 2024

FAF to MAP	5.4 NM				
Knots	60	90	120	150	180
Min:Seq	5:24	3:36	2:42	2:10	1:48