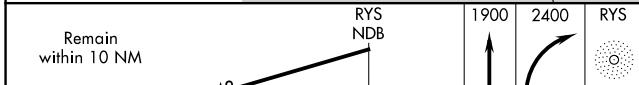
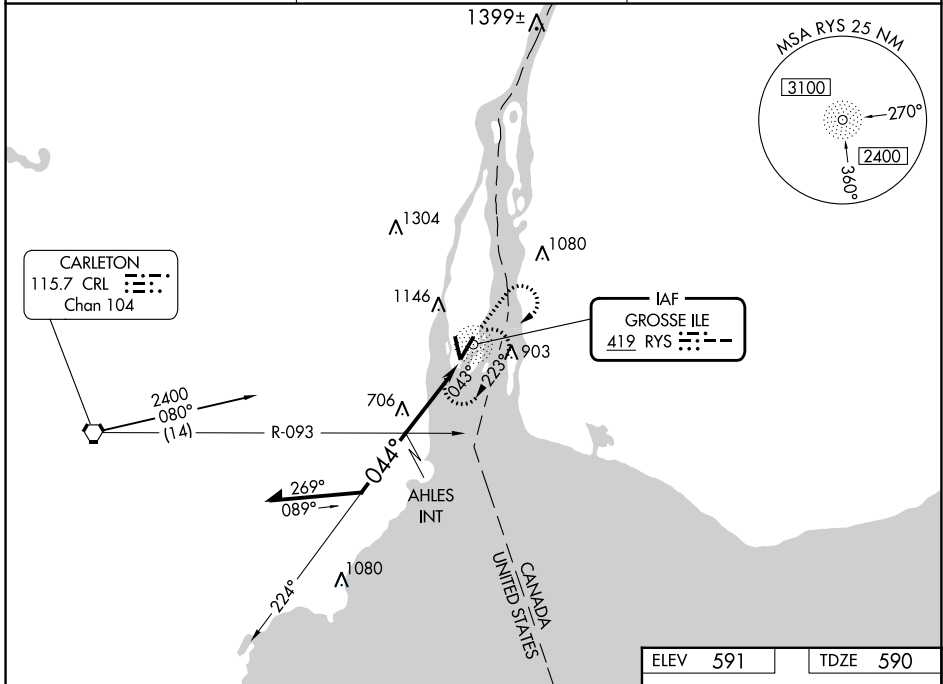


NDB RYS <b>419</b>	APP CRS <b>044°</b>	Rwy ldg TDZE Apt Elev	<b>4846</b> <b>590</b> <b>591</b>
-----------------------	------------------------	-----------------------------	---

**NDB RWY 4**  
GROSSE ILE MUNI (ONZ)

**▼** Visibility reduction by helicopters NA. When local altimeter setting not received, use Detroit Metropolitan Wayne County altimeter setting and increase all MDA 40 feet. Increase AHLES fix minimums Circling Cat A, C, and D visibilities ¼ mile.  
**▲** MISSED APPROACH: Climb to 1900 then climbing right turn to 2400 direct RYS NDB and hold.

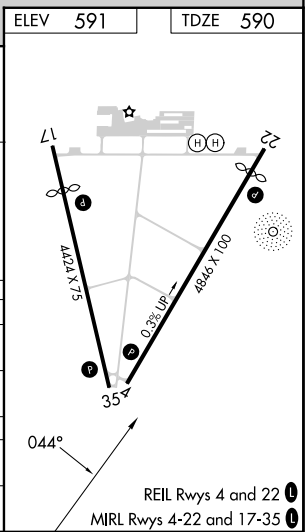
AWOS-3 <b>119.675</b>	DETROIT APP CON <b>134.3 284.0</b>	UNICOM <b>123.0 (CTAF) 1</b>
--------------------------	---------------------------------------	---------------------------------



ELEV 591	TDZE 590	
1900	2400	RYS
↑	↷	○

\*1540 when using Detroit Metropolitan Wayne County altimeter setting.

CATEGORY	A	B	C	D
S-4	1500-1¼	910 (1000-1¼)	1500 - 2¾ 910 (1000-2¾)	1500 - 3 910 (1000-3)
CIRCLING	1500-1¼	909 (1000-1¼)	1500 - 2¾ 909 (1000-2¾)	1500 - 3 909 (1000-3)
AHLES FIX MINIMUMS				
S-4	1140 - 1	550 (600-1)	1140 - 1½ 550 (600-1½)	1140 - 1¾ 550 (600-1¾)
CIRCLING	1460 - 1 869 (900-1)	1460 - 1¼ 869 (900-1¼)	1460 - 2½ 869 (900-2½)	1460 - 2¾ 869 (900-2¾)



EC-1, 28 NOV 2024 to 26 DEC 2024

EC-1, 28 NOV 2024 to 26 DEC 2024