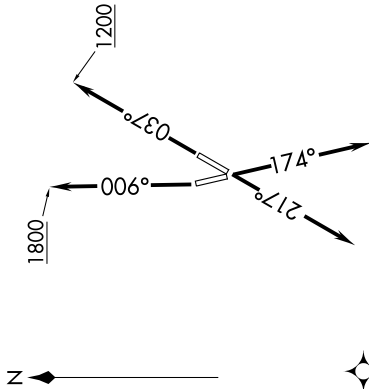


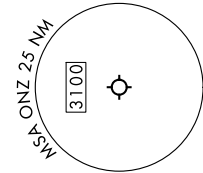
DETROIT DEP CON
134.3 284.0
AWOS-3
119.675
CTAF
123.0

**TOP ALTITUDE:
ASSIGNED BY ATC**

RNAV-1 DME/DME/IRU or GPS.
RADAR required.



TAKEOFF MINIMUMS:
Rwys 4, 17, 22: Standard.
Rwy 35: Standard with minimum climb
of 500' per NM to 1100.



EC-1, 28 NOV 2024 to 26 DEC 2024

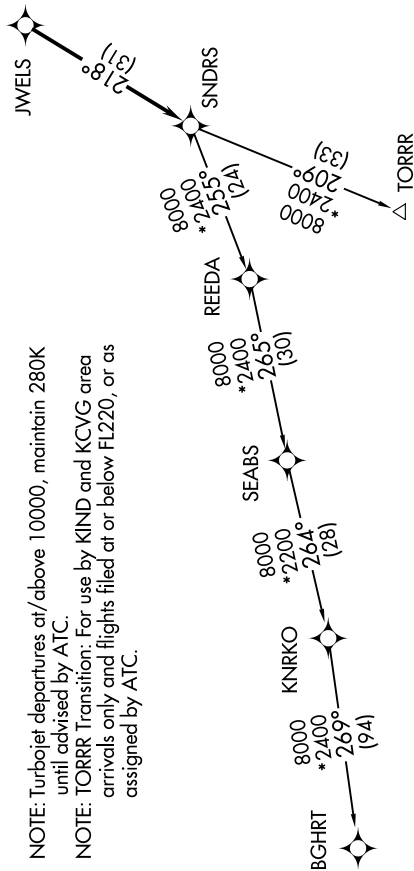
DEPARTURE ROUTE DESCRIPTION

TAKEOFF RUNWAY 4: Climb on heading 037° to 1200 then as assigned by ATC, thence....
TAKEOFF RUNWAY 17: Climb on heading 174° or as assigned by ATC, thence....
TAKEOFF RUNWAY 22: Climb on heading 217° or as assigned by ATC, thence....
TAKEOFF RUNWAY 35: Climb on heading 006° to 1800 then as assigned by ATC, thence....

....for RADAR vectors to JWELS, then on track 218° to SNDRS, then on (transition). Maintain ATC assigned altitude, expect filed altitude 10 minutes after departure.

BGHRT TRANSITION (SNDRS3.BGHRT):
TORRR TRANSITION (SNDRS3.TORRR):

NOTE: Turbojet departures at/above 10000, maintain 280K until advised by ATC.
NOTE: TORRR Transition: For use by KIND and KCVG area arrivals only and flights filed at or below FL220, or as assigned by ATC.



NOTE: Chart not to scale.

EC-1, 28 NOV 2024 to 26 DEC 2024