

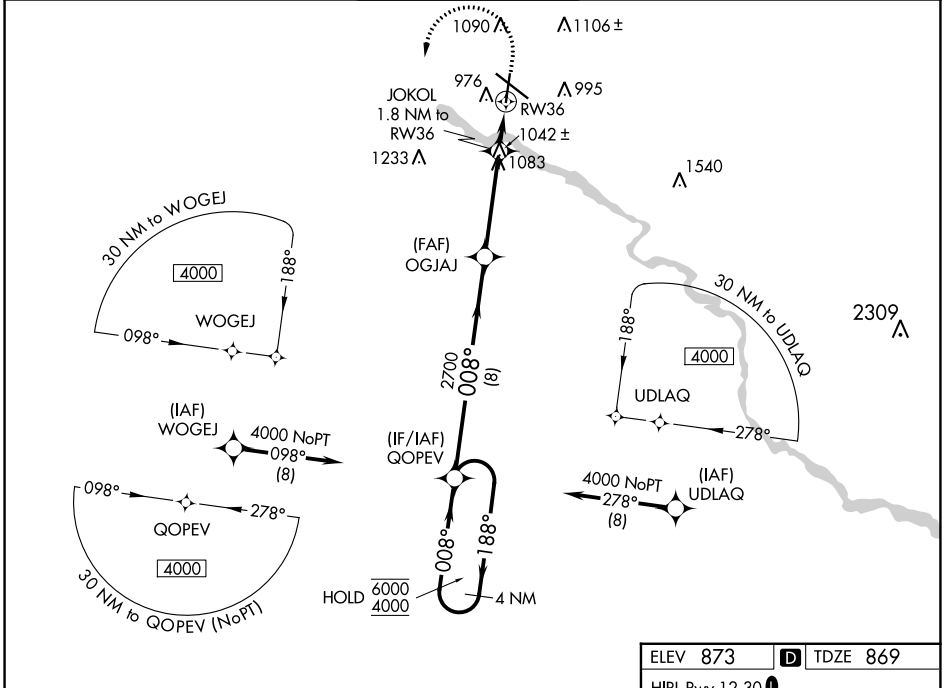
WAAS CH <b>48942</b> <b>W36A</b>	APP CRS <b>008°</b>	Rwy Idg TDZE Apt Elev	<b>6003</b> <b>869</b> <b>873</b>
--	------------------------	-----------------------------	---

# RNAV (GPS) RWY 36

WATERLOO RGNL (A.I.O)

RNP APCH-GPS.		MISSED APPROACH: Climb to 2000 then climbing left turn to 4000 direct QOPEV and hold.	
▼ For uncompensated Baro-VNAV systems, LNAV/VNAV NA below -20°C or above 54°C.			

ATIS <b>120.65</b>	WATERLOO APP CON * <b>118.9 251.15</b>	WATERLOO TOWER * <b>125.075 (CTAF) 0 257.8</b>	GND CON <b>121.9 269.1</b>	UNICOM <b>122.95</b>
-----------------------	---	---	-------------------------------	-------------------------



NC-3, 28 NOV 2024 to 26 DEC 2024

NC-3, 28 NOV 2024 to 26 DEC 2024

VGSI and RNAV glidepath not coincident. (VGSI Angle 3.00/TCH 40).		2000	4000	QOPEV
4 NM Holding Pattern		* LNAV only		
GP 3.00° TCH 40		* 1.2 NM to RW36		
CATEGORY	A	B	C	D
LPV DA	1069-3/4		200 (200-3/4)	
LNAV/VNAV DA	1190-1		321 (400-1)	
LNAV MDA	1300-1	431 (500-1)	1300-1 1/4	431 (500-1 1/4)
CIRCLING	1360-1	1400-1	1480-1 3/4	1600-2 1/4
	487 (500-1)	527 (600-1)	607 (700-1 3/4)	727 (800-2 1/4)

