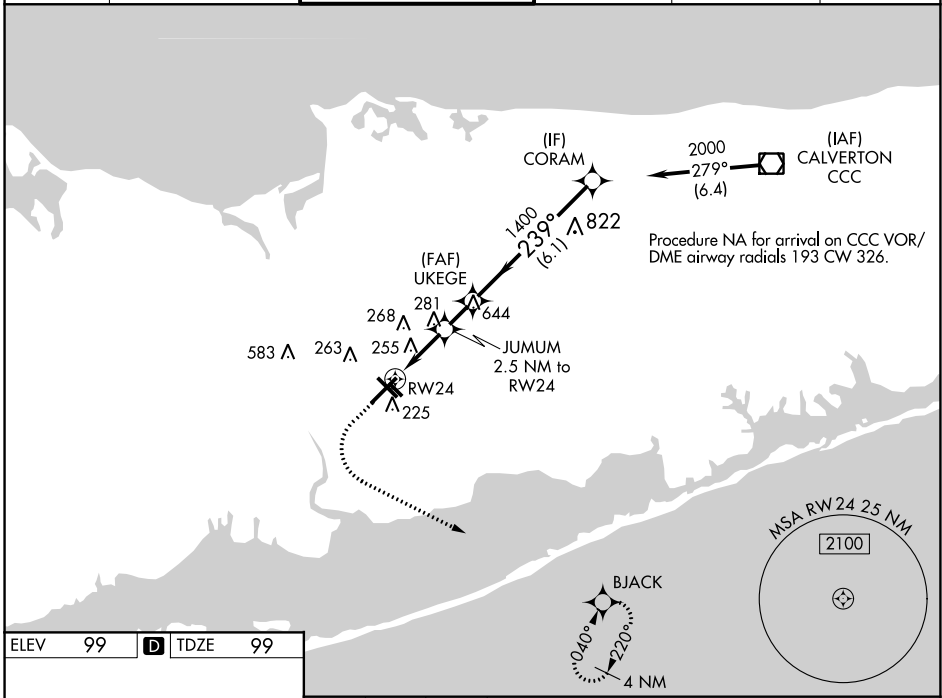


WAAS CH <b>82610</b> <b>W24A</b>	APP CRS <b>239°</b>	Rwy Idg TDZE Apt Elev <b>7006</b> <b>99</b> <b>99</b>
--	------------------------	--

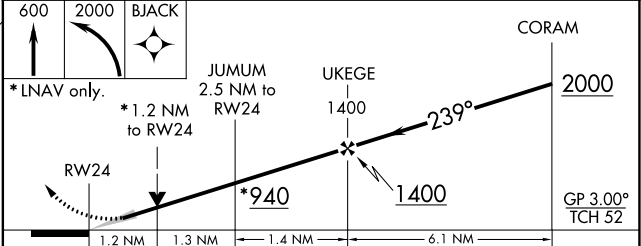
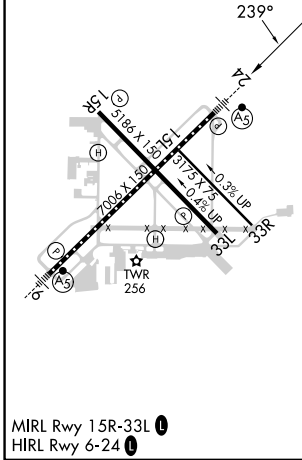
# RNAV (GPS) RWY 24

LONG ISLAND MAC ARTHUR (ISP)

<p>For uncompensated Baro-VNAV systems, LNAV/VNAV NA below -15°C (5°F) or above 54°C (130°F). DME/DME RNP-0.3 NA.</p>	<p>MALSRL</p>	<p>MISSED APPROACH: Climb to 600 then climbing left turn to 2000 direct BJACK and hold.</p>
	<p>ATIS <b>120.725</b>    NEW YORK APP CON <b>120.05 343.75</b>    LONG ISLAND TOWER* <b>119.3 (CTAF) 0335.5</b>    GND CON <b>135.3</b>    CLNC DEL <b>121.85</b>    UNICOM <b>122.95</b></p>	



ELEV 99	<b>D</b> TDZE 99
---------	------------------



CATEGORY	A	B	C	D
LPV DA		299/18	200 (200-½)	
LNAV/VNAV DA		541/50	442 (500-1)	
LNAV MDA	520/24	421 (500-½)	520/40	421 (500-¾)
<b>C</b> CIRCLING	600-1 501 (600-1)	660-1 561 (600-1)	660-1½ 561 (600-1½)	960-2¾ 861 (900-2¾)

NE-2, 28 NOV 2024 to 26 DEC 2024

NE-2, 28 NOV 2024 to 26 DEC 2024