

WAAS CH 49120 W33A	APP CRS 329°	Rwy Idg TDZE 89 Apt Elev 99	5186
--	------------------------	---	-------------

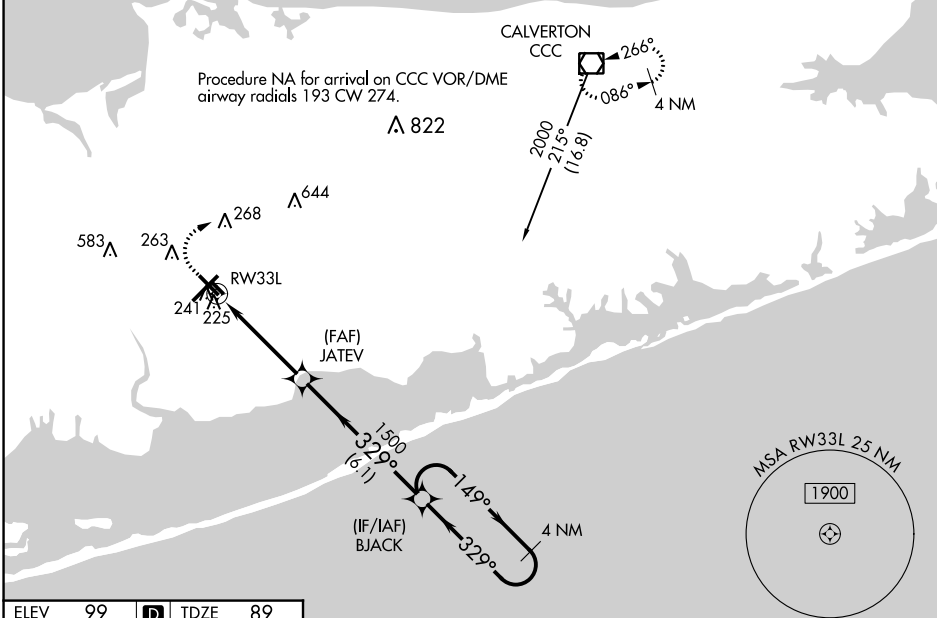
RNAV (GPS) RWY 33L

LONG ISLAND MAC ARTHUR (ISP)

⚠ For uncompensated Baro-VNAV systems, LNAV/VNAV NA below -14°C (7°F) or above 54°C (130°F).
⚠ DME/DME RNP-0.3 NA. When local altimeter setting not received, use Shirley altimeter setting and increase LPV DA to 367 feet, LNAV/VNAV DA to 440 feet and LPV and LNAV/VNAV visibility all Cats 1/8 mile, all MDA 40 feet, increase LNAV Cats C/D visibility 1/8 mile, and Circling Cats C/D visibility 1/4 mile. VDP and Baro-VNAV NA when using Shirley altimeter setting. Helicopter visibility reduction below 3/4 SM NA.

MISSED APPROACH:
 Climb to 600 then climbing right turn to 2000 direct CCC VOR/DME and hold.

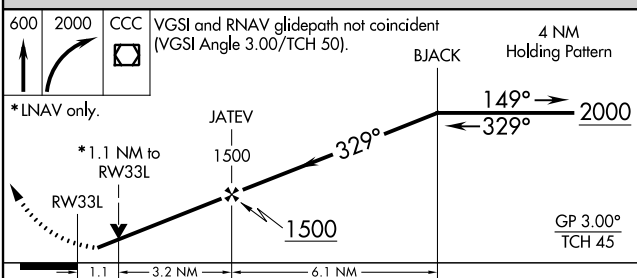
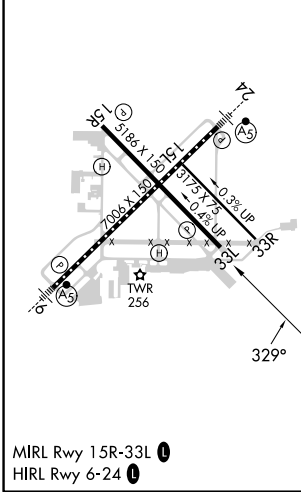
ATIS 120.725	NEW YORK APP CON 120.05 343.75	LONG ISLAND TOWER* 119.3 (CTAF) 335.5	GND CON 135.3	CLNC DEL 121.85	UNICOM 122.95
------------------------	--	---	-------------------------	---------------------------	-------------------------



NE-2, 28 NOV 2024 to 26 DEC 2024

NE-2, 28 NOV 2024 to 26 DEC 2024

ELEV 99	D	TDZE 89
---------	----------	---------



CATEGORY	A	B	C	D
LPV DA		339-7/8	250 (300-7/8)	
LNAV/VNAV DA		412-1 1/8	323 (400-1 1/8)	
LNAV MDA	500-1	411 (500-1)	500-1 1/4	411 (500-1 1/4)
C CIRCLING	600-1 501 (600-1)	660-1 561 (600-1)	660-1 1/2 561 (600-1 1/2)	960-2 3/4 861 (900-2 3/4)