

WAAS CH <b>66010</b> <b>W06A</b>	APP CRS <b>059°</b>	Rwy Idg <b>7006</b> TDZE <b>94</b> Apt Elev <b>99</b>
--	------------------------	---

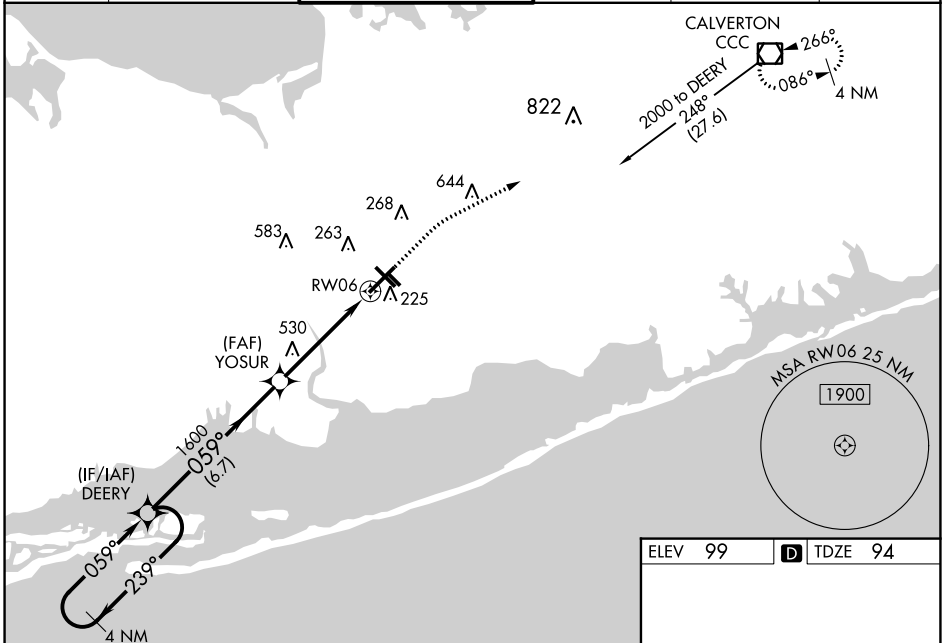
# RNAV (GPS) RWY 6

## LONG ISLAND MAC ARTHUR (ISP)

**⚠** For uncompensated Baro-VNAV systems, LNAV/VNAV NA below -14°C (7°F) or above 54°C (130°F). DME/DME RNP-0.3 NA. VDP and Baro-VNAV NA when using Shirley altimeter setting. When local altimeter setting not received, use Shirley altimeter setting and increase all DA 28 feet and all MDA 40 feet, increase LNAV/VNAV all Cats visibility to RVR 3000 and LNAV Cat C and D visibility to 4500. Increase Circling Cat C and D visibility ¼ mile. For inoperative MALS, increase LNAV/VNAV all Cats visibility to RVR 4500 and LNAV Cat C and D to RVR 6000. For inoperative MALS when using Shirley altimeter setting increase LNAV/VNAV all Cats visibility to RVR 5000. \*\*RVR 1800 authorized with use of FD or AP or HUD to DA, NA when using Shirley altimeter setting.

**MALS** MISSED APPROACH:  
Climb to 600 then climbing right turn to 2000 direct CCC VOR/DME and hold.

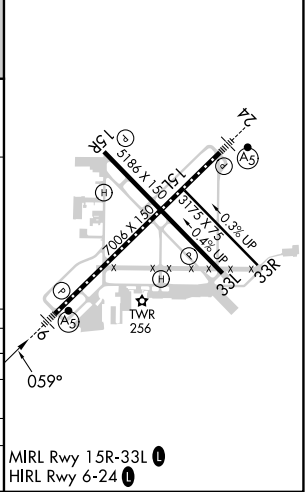
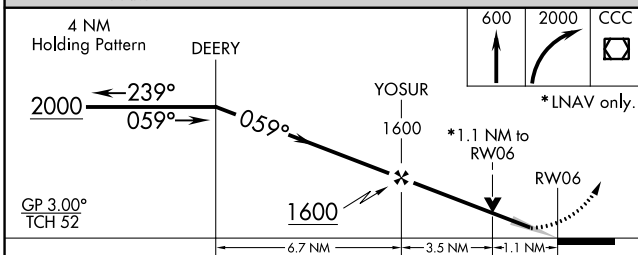
ATIS <b>120.725</b>	NEW YORK APP CON <b>120.05 343.75</b>	LONG ISLAND TOWER* <b>119.3 (CTAF) 0335.5</b>	GND CON <b>135.3</b>	CLNC DEL <b>121.85</b>	UNICOM <b>122.95</b>
------------------------	--	--	-------------------------	---------------------------	-------------------------



NE-2, 28 NOV 2024 to 26 DEC 2024

NE-2, 28 NOV 2024 to 26 DEC 2024

ELEV <b>99</b>	<b>D</b> TDZE <b>94</b>
----------------	-------------------------



CATEGORY	A	B	C	D
LPV DA	**294/24 200 (200-½)			
LNAV/VNAV DA	385/24 291 (300-½)			
LNAV MDA	500/24	406 (500-½)	500/40	406 (500-¾)
<b>C</b> CIRCLING	600-1 501 (600-1)	660-1 561 (600-1)	660-1½ 561 (600-½)	960-2¾ 861 (900-2¾)

MIRL Rwy 15R-33L **Ⓛ**  
HIRL Rwy 6-24 **Ⓛ**