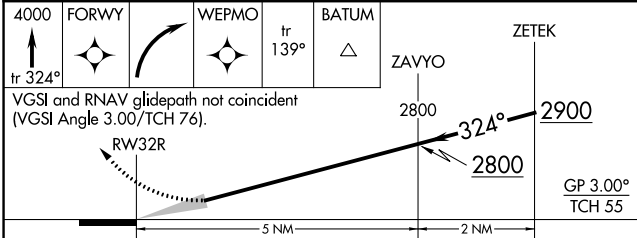
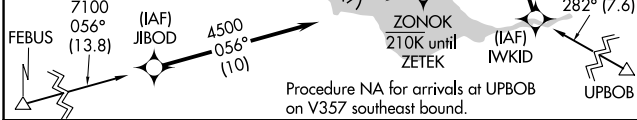
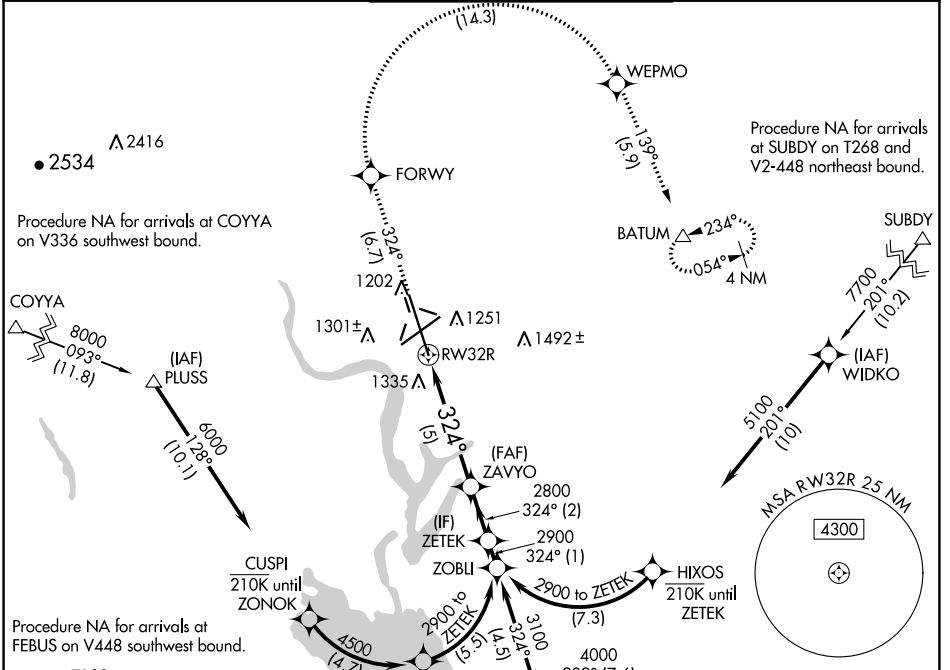


APP CRS	Rwy ldg	<b>13492</b>
<b>324°</b>	TDZE	<b>1167</b>
	Apt Elev	<b>1189</b>

# RNAV (RNP) Z RWY 32R

GRANT COUNTY INTL (MWH)

RNP AR APCH-GPS.		MALSR	MISSED APPROACH: Climb to 4000 on track 324° to FORWY right turn to WEPMO and track 139° to BATUM and hold.		
<p>▼ For uncompensated Baro-VNAV systems, procedure NA below -15°C or above 54°C. For inoperative ALS increase RNP 0.10 visibility all Cats to RVR 4000, increase RNP 0.30 visibility all Cats to RVR 6000.</p>					
ATIS	GRANT COUNTY APP CON *	GRANT COUNTY TOWER *		GND CON	UNICOM
<b>119.05</b>	<b>126.4 379.95</b>	<b>118.25 (CTAF) 257.8 (EAST)</b> <b>128.0 257.8 (WEST)</b>		<b>121.9</b>	<b>122.95</b>



CATEGORY	A	B	C	D
RNP 0.10 DA		1417/24	250 (300-½)	
RNP 0.30 DA		1564/35	397 (400-⅘)	

**AUTHORIZATION REQUIRED**

ELEV 1189	TDZE 1167
-----------	-----------

REIL Rwy 4

REIL Rwys 14L and 22

HIRL Rwy 14L-32R

MIRL Rwys 4-22 and 18-36

NW-1, 28 NOV 2024 to 26 DEC 2024

NW-1, 28 NOV 2024 to 26 DEC 2024