

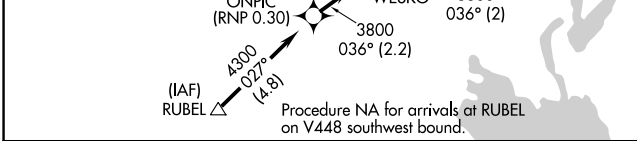
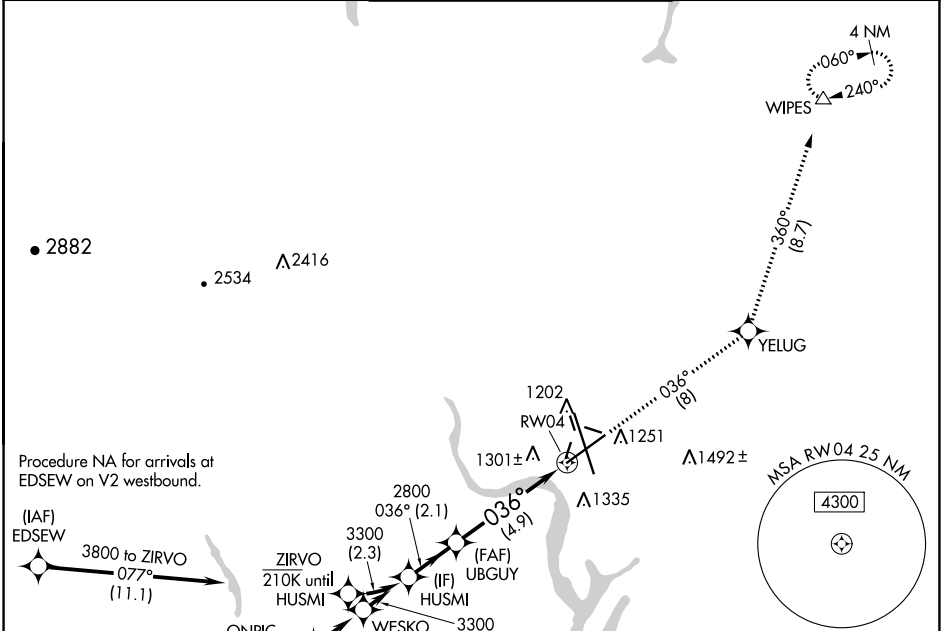
APP CRS	Rwy Idg	<b>10000</b>
<b>036°</b>	TDZE	<b>1189</b>
	Apt Elev	<b>1189</b>

# RNAV (RNP) Z RWY 4

GRANT COUNTY INTL (MWH)

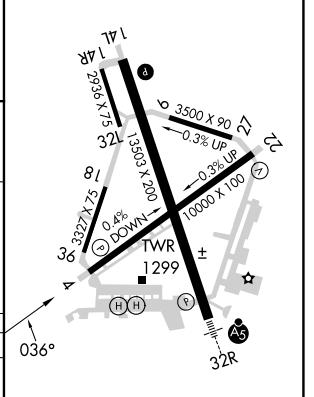
RNP AR APCH-GPS.		MISSED APPROACH: Climb to 4000 on track 036° to YELUG and track 360° to WIPES and hold.	

ATIS <b>119.05</b>	GRANT COUNTY APP CON * <b>126.4 379.95</b>	GRANT COUNTY TOWER * <b>118.25 (CTAF) 0 257.8 (EAST)</b> <b>128.0 257.8 (WEST)</b>	GND CON <b>121.9</b>	UNICOM <b>122.95</b>
-----------------------	-----------------------------------------------	------------------------------------------------------------------------------------------	-------------------------	-------------------------



ELEV 1189	<b>D</b>	TDZE 1189
-----------	----------	-----------

HUSMI	4000	YELUG	WIPES
3300			
UBGUY	2800		
	2800		
			RWY04
	2.1 NM	4.9 NM	
GP 3.00°			
TCH 50			



CATEGORY	A	B	C	D
RNP 0.10 DA	1549-1 360 (400-1)			
RNP 0.30 DA	1644-1 3/8 455 (500-1 3/8)			

## AUTHORIZATION REQUIRED

REIL Rwy 4  
REIL Rwy 14L and 22  
HIRL Rwy 14L-32R  
MIRL Rwy 4-22 and 18-36

NW-1, 28 NOV 2024 to 26 DEC 2024

NW-1, 28 NOV 2024 to 26 DEC 2024