

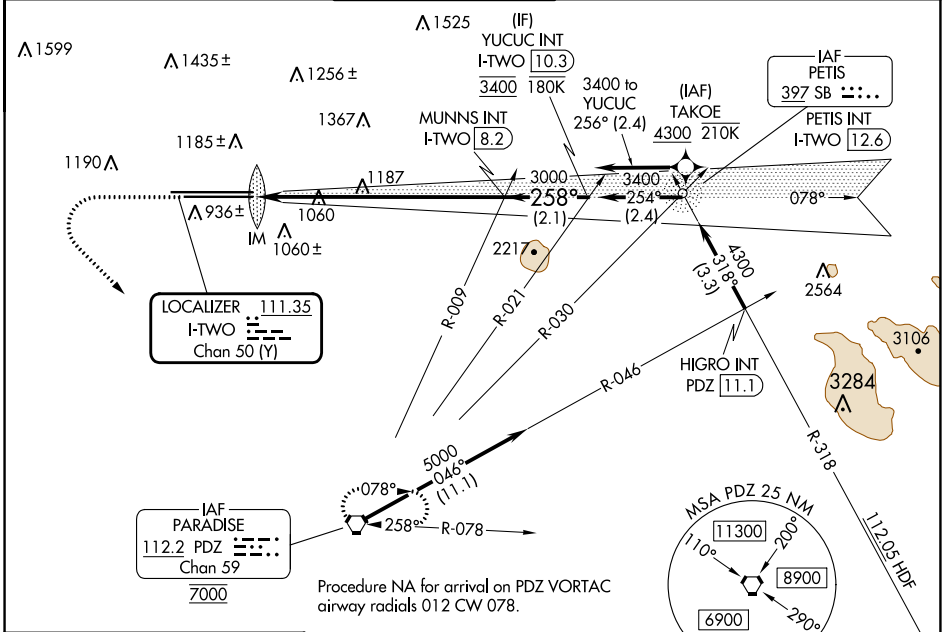
LOC/DME I-TWO 111.35 Chan 50(Y)	APP CRS 258°	Rwy Idg TDZE Apt Elev	10200 926 944
---	------------------------	-----------------------------	--

ILS RWY 26L (CAT II & III)

ONTARIO INTL (ONT)

RNP APCH - GPS. From TAKOE.		ALSIF-2 	MISSED APPROACH: Climb to 2800 then climbing left turn to 5400 direct PDZ VORTAC and hold, continue climb-in-hold to 5400.		
-----------------------------	--	-------------	--	--	--

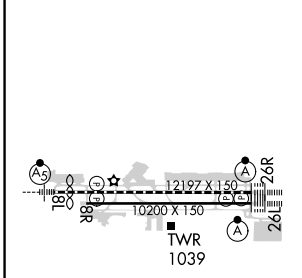
D-ATIS 124.25	SOCAL APP CON 127.0 318.2	ONTARIO TOWER 120.6 360.775	GND CON 121.9 257.8	CLNC DEL 132.9	CPDLC
-------------------------	-------------------------------------	---------------------------------------	-------------------------------	--------------------------	-------



SW-3, 28 NOV 2024 to 26 DEC 2024

SW-3, 28 NOV 2024 to 26 DEC 2024

ELEV 944	D	TDZE 926
----------	----------	----------



2800	5400	PDZ	VGS1 and ILS glidepath not coincident (VGS1 Angle 3.00/TCH 74).
MUNNS INT I-TWO [8.2]		YUCUC INT I-TWO [10.3]	
3000		3400	
258°		3000	
1025		1026	
GS 3.00°		TCH 58	

CATEGORY	A	B	C	D
S-ILS 26L	CAT II RA 103/12 100 DA 1026			
S-ILS 26L	CAT III RVR 06			

CATEGORY II & III ILS - SPECIAL AIRCREW & AIRCRAFT CERTIFICATION REQUIRED