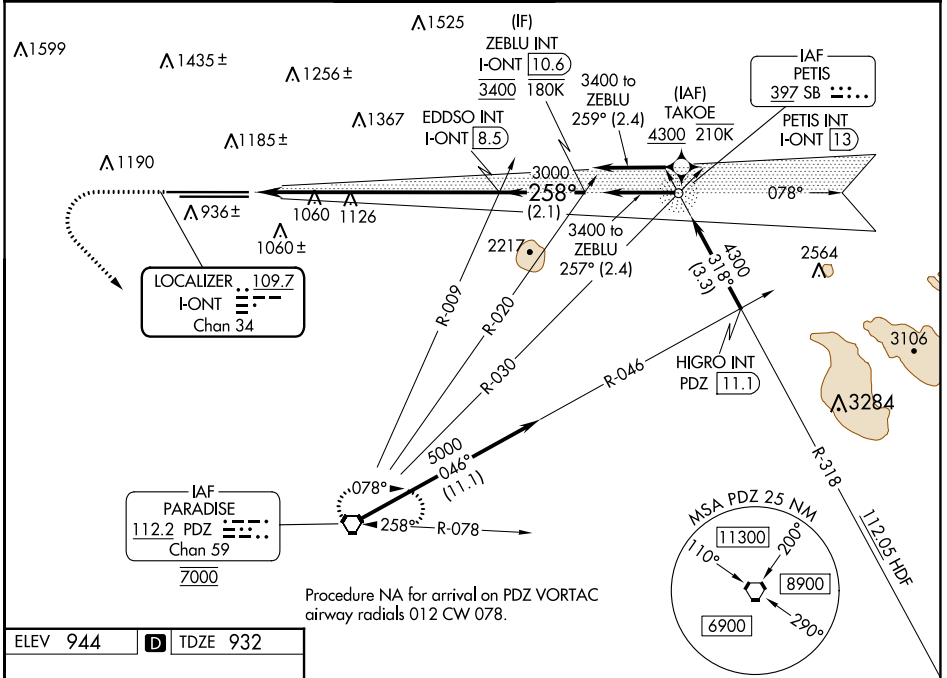


| | | |
|---|------------------------|---|
| LOC/DME I-ONT 109.7 Chan 34 | APP CRS 258° | Rwy Idg TDZE 932 Apt Elev 944 |
|---|------------------------|---|

ILS RWY 26R (CAT II & III)

ONTARIO INTL (ONT)

| | | | | | |
|-----------------------------|-------------------------------------|---------------------------------------|--|--------------------------|-------|
| RNP APCH - GPS. From TAKOE. | | ALSF-2 | MISSED APPROACH: Climb to 2800 then climbing left turn to 5400 direct PDZ VORTAC and hold, continue climb-in-hold to 5400. | | |
| D-ATIS 124.25 | SOCAL APP CON 127.0 318.2 | ONTARIO TOWER 120.6 360.775 | GND CON 121.9 257.8 | CLNC DEL 132.9 | CPDLC |



SW-3, 28 NOV 2024 to 26 DEC 2024

SW-3, 28 NOV 2024 to 26 DEC 2024

| | | | | |
|--|------------------------------|----------------------|---|---|
| ELEV 944 | D | TDZE 932 | | |
| 2800 | 5400 | PDZ | VGSI and ILS glidepath not coincident (VGSI Angle 3.00/TCH 75). | |
| | | ZEBLU INT I-ONT 10.6 | | |
| | | EDDSO INT I-ONT 8.5 | | |
| CATEGORY | A | B | C | D |
| S-ILS 26R | CAT II RA 100/12 100 DA 1032 | | | |
| S-ILS 26R | CAT III RVR 03 | | | |
| CATEGORY II & III ILS - SPECIAL AIRCREW & AIRCRAFT CERTIFICATION REQUIRED | | | | |

TDZ/CL Rwys 8L, 26L and 26R
HIRL Rwys 8L-26R and 8R-26L

ONTARIO, CALIFORNIA
Amdt 6 10AUG23

34°03'N-117°36'W

ONTARIO INTL (ONT)
ILS RWY 26R (CAT II & III)