

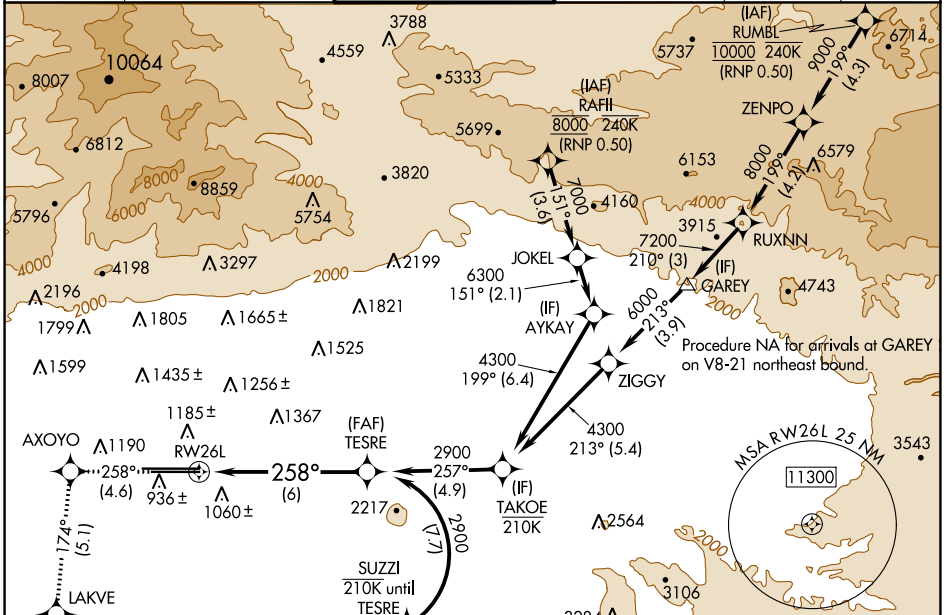
APP CRS	Rwy Idg	10200
258°	TDZE	926
	Apt Elev	944

RNAV (RNP) Z RWY 26L

ONTARIO INTL (ONT)

RNP AR APCH - GPS.		ALSF-2 	MISSED APPROACH: Climb to 3400 on track 258° to AXOYO and track 174° to LAKVE and track 122° to MARIAM and track 079° to ADRYN and hold.
▼ For uncompensated Baro-VNAV systems, procedure NA below 1°C or above 54°C. For inop ALS, increase RNP 0.10 visibility all Cats to RVR 4500, RNP 0.17 visibility all Cats to RVR 5000, RNP 0.30 visibility all Cats to RVR 6000.			

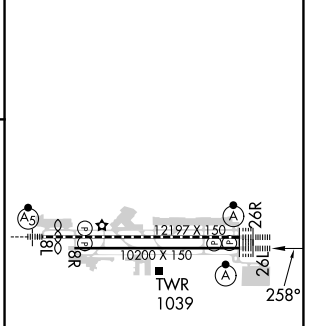
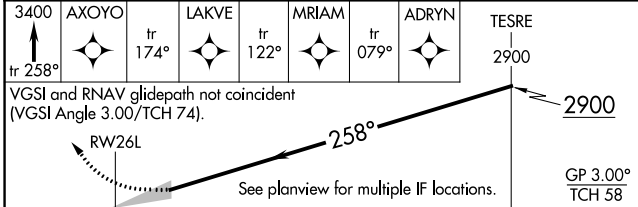
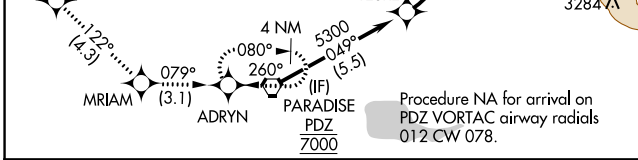
D-ATIS	SOCAL APP CON	ONTARIO TOWER	GND CON	CLNC DEL	CPDLC
124.25	127.0 318.2	120.6 360.775	121.9 257.8	132.9	



SW-3, 28 NOV 2024 to 26 DEC 2024

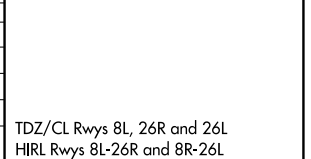
SW-3, 28 NOV 2024 to 26 DEC 2024

ELEV 944	D TDZE 926
----------	-------------------



CATEGORY	A	B	C	D
RNP 0.10 DA		1203/24	277 (300-½)	
RNP 0.17 DA		1245/24	319 (400-½)	
RNP 0.30 DA		1322/35	396 (400-¾)	

AUTHORIZATION REQUIRED



TDZ/CL Rwys 8L, 26R and 26L
 HIRL Rwys 8L-26R and 8R-26L