

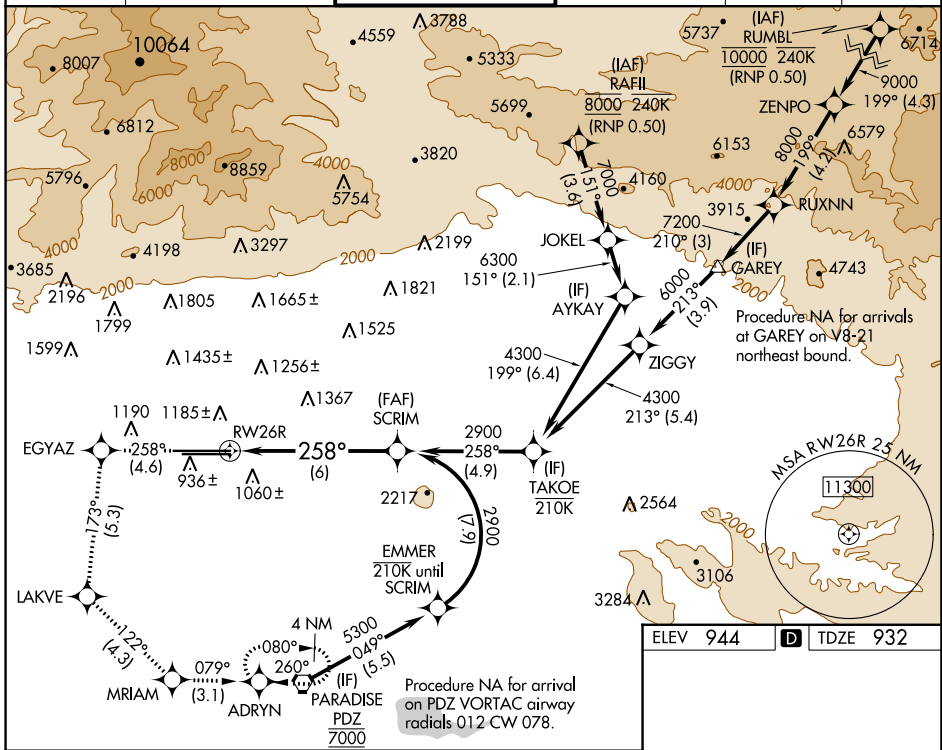
APP CRS	Rwy Idg	12197
258°	TDZE	932
	Apt Elev	944

RNAV (RNP) Z RWY 26R

ONTARIO INTL (ONT)

RNP AR APCH - GPS.	ALSF-2	MISSED APPROACH: Climb to 3400 on track 258° to EGYAZ and track 173° to LAKVE and track 122° to MARIAM and on track 079° to ADRYN and hold.
<p>▼ For uncompensated Baro-VNAV systems, procedure NA below 1°C or above 54°C. For inop ALS, increase RNP 0.12 visibility all Cats to RVR 4500, RNP 0.21 visibility all Cats to RVR 5500, RNP 0.30 visibility all Cats to RVR 6000.</p>		

D-ATIS	SOCAL APP CON	ONTARIO TOWER	GND CON	CLNC DEL	CPDLC
124.25	127.0 318.2	120.6 360.775	121.9 257.8	132.9	



SW-3, 28 NOV 2024 to 26 DEC 2024

SW-3, 28 NOV 2024 to 26 DEC 2024

3400	EGYAZ	LAKVE	MARIAM	ADRYN	SCRIM
tr 258°	tr 173°	tr 122°	tr 079°	tr 079°	2900
<p>VGSI and RNAV glidepath not coincident (VGSI Angle 3.00/TCH 75).</p> <p>See planview for multiple IF locations.</p>					
<p>6 NM</p>					
CATEGORY	A	B	C	D	
RNP 0.12 DA		1239/40	307 (300-¾)		
RNP 0.21 DA		1297/40	365 (400-¾)		
RNP 0.30 DA		1321/40	389 (400-¾)		
AUTHORIZATION REQUIRED					

ELEV 944	D TDZE 932
----------	-------------------

TDZ/CL Rws 8L, 26R and 26L
HIRL Rws 8L-26R and 8R-26L