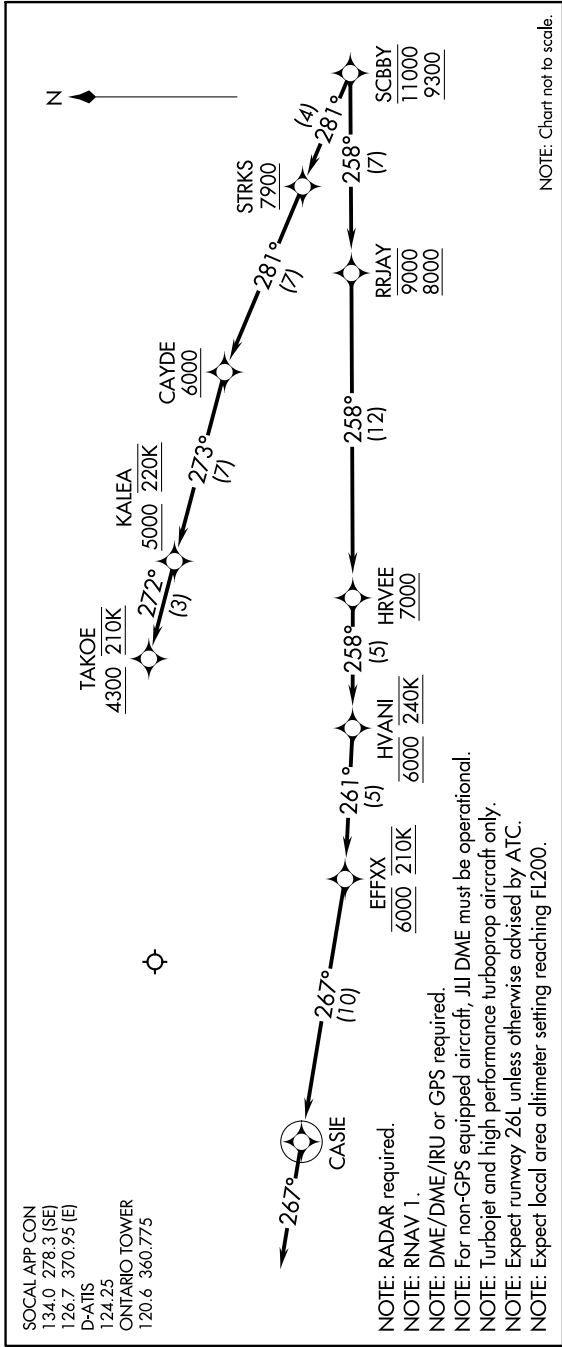


SCBBY TWO ARRIVAL (RNAV) Arrival Routes

AL-965 (FAA)

ONTARIO INTL (ONT)
ONTARIO, CALIFORNIA

SW-3, 28 NOV 2024 to 26 DEC 2024



NOTE: Chart not to scale.

ARRIVAL ROUTE DESCRIPTION

LANDING RUNWAYS 8L/R: From SCBBY on track 258° to cross RRJAY between 8000 and 9000, then on track 258° to cross HRVVEE at or above 7000, then on track 258° to cross HVANI at 6000 and at 240K, then on track 261° to cross EFFXX at 6000 and at 210K, then on track 267° to CASIE, then on track 267°. Expect RNAV (RNP) Z RWY 8L approach or RADAR vectors to final approach course.

LANDING RUNWAYS 26L/R: From SCBBY on track 281° to cross STRKS at or above 7900, then on track 281° to cross CAYDE at or above 6000, then on track 273° to cross KALEA at or above 5000 and at 220K, then on track 272° to cross TAKOE at or above 4300 and at 210K. Expect assigned instrument approach or RADAR vectors to final approach course.

LOST COMMUNICATIONS

LANDING WEST: Proceed on the RNAV (RNP) Z RWY 26L approach or ILS or LOC RWY 26L approach.

LANDING EAST: Proceed on the RNAV (RNP) Z RWY 8L approach or ILS or LOC RWY 8L approach.

SW-3, 28 NOV 2024 to 26 DEC 2024

SCBBY TWO ARRIVAL (RNAV) Arrival Routes

ONTARIO, CALIFORNIA
ONTARIO INTL (ONT)