

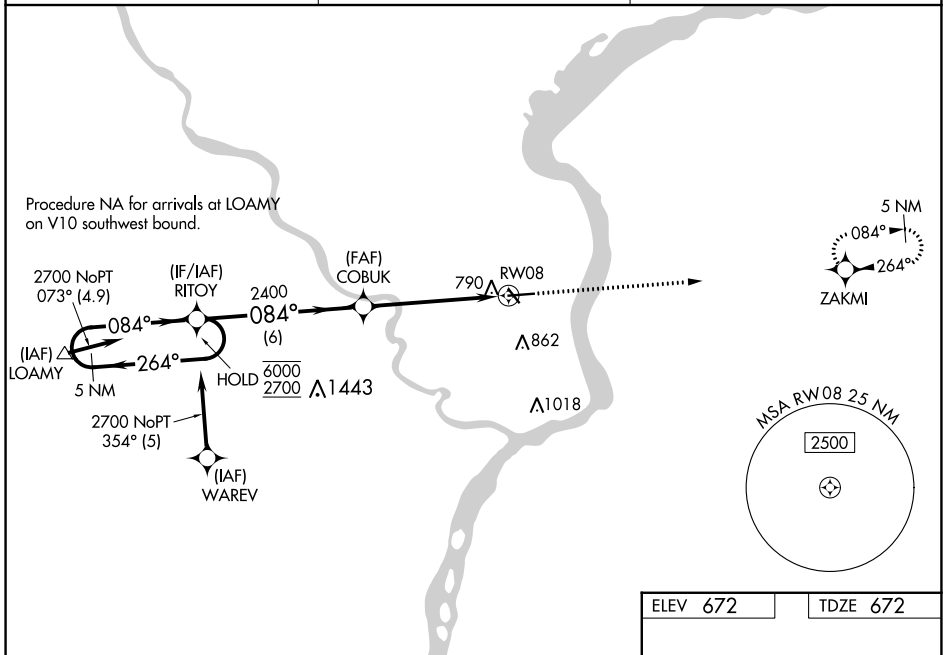
WAAS CH 97304 W08A	APP CRS 084°	Rwy Idg TDZE 672 Apt Elev 672
--	------------------------	---

RNAV (GPS) RWY 8

KEOKUK MUNI (EOK)

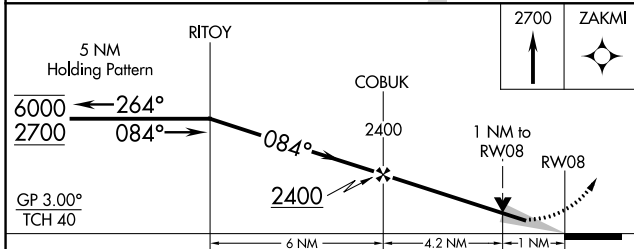
RNP APCH - GPS.	MISSED APPROACH: Climb to 2700 direct ZAKMI and hold.
<p>⚠ Circling to Rwy 32 NA at night. Baro-VNAV and VDP NA when using Burlington altimeter setting. For uncompensated Baro-VNAV systems, LNAV/VNAV NA below -16°C or above 54°C. When local altimeter setting not received, use Burlington altimeter setting: increase LPV DA to 978 feet; LNAV/VNAV DA to 1116; increase all MDAs 60 feet and visibility Cat C ¼ SM.</p>	

AWOS-3 118.375	KANSAS CITY CENTER 126.225 317.775	UNICOM 122.8 (CTAF) 0
--------------------------	--	---------------------------------

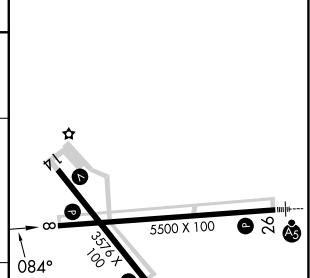


NC-3, 28 NOV 2024 to 26 DEC 2024

NC-3, 28 NOV 2024 to 26 DEC 2024



ELEV 672	TDZE 672
----------	----------



CATEGORY	A	B	C	D
LPV DA	922-1 250 (300-1)			NA
LNAV/VNAV DA	1060-1½ 388 (400-1½)			NA
LNAV MDA	1040-1 368 (400-1)			NA
CIRCLING	1180-1 508 (600-1)	1220-1 548 (600-1)	1220-1½ 548 (600-1½)	NA

REIL Rwy 8, 14, and 32 0
MIRL Rwy 8-26 and 14-32 0