

LOC I-SBY 108.7	APP CRS 319°	Rwy Idg 6400	TDZE 53
		Apt Elev 53	

ILS or LOC RWY 32

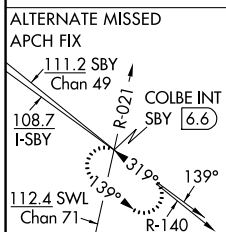
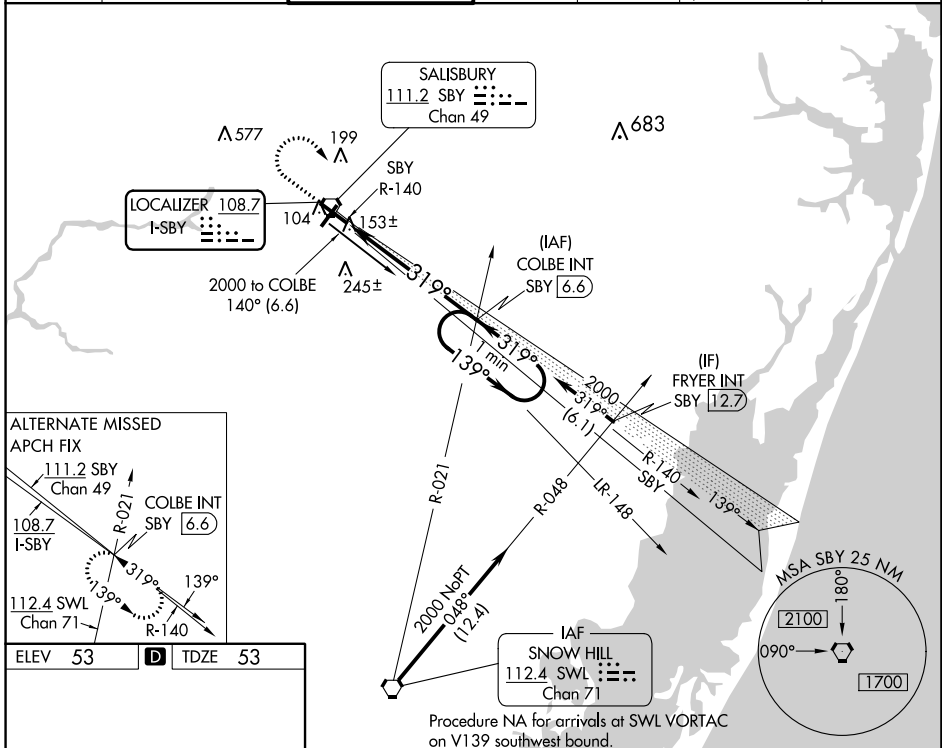
SALISBURY-OCEAN CITY WICOMICO RGNL (SBY)

▼ When local altimeter setting not received, use Georgetown altimeter setting: increase DA to 305 feet; increase all MDA 60 feet and S-LOC 32 Cat C and Circling Cat D visibility ¼ SM.

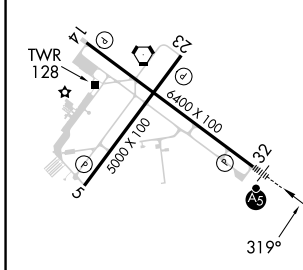


MISSED APPROACH: Climb to 700 then climbing right turn to 2000 on heading 170° and on SBY VORTAC R-140 to COLBE INT/SBY VORTAC 6.6 DME and hold.

ASOS 118.325	PATUXENT APP CON★ 127.95 314.0	SALISBURY TOWER★ 119.425 (CTAF) 0	GND CON 123.775	CLNC DEL 123.775	CLNC DEL 118.55 (when twr closed)	UNICOM 122.95
------------------------	--	--	---------------------------	----------------------------	--	-------------------------



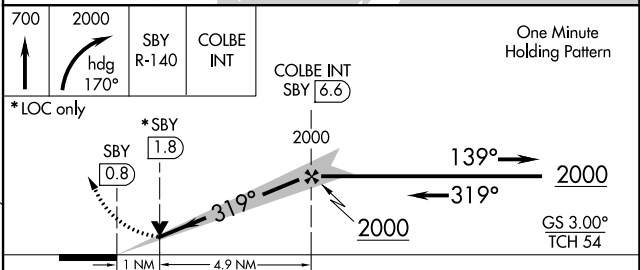
ELEV 53	D	TDZE 53
---------	----------	---------



REIL Rwy 5, 14 and 23 **0**
MIRL Rwy 5-23 **0**
HIRL Rwy 14-32 **0**

FAF to MAP 5.9 NM

Knots	60	90	120	150	180
Min:Sec	5:54	3:56	2:57	2:22	1:58



CATEGORY	A	B	C	D
S-ILS 32	253-½ 200 (200-½)			
S-LOC 32	420-½ 367 (400-½) 420-¾ 367 (400-¾)			
CIRCLING	480-1 427 (500-1)	520-1 467 (500-1)	560-1½ 507 (600-1½)	700-2 647 (700-2)