

APP CRS <b>239°</b>	Rwy Idg <b>6006</b>
	TDZE <b>193</b>
	Apt Elev <b>212</b>

# RNAV (RNP) Y RWY 24

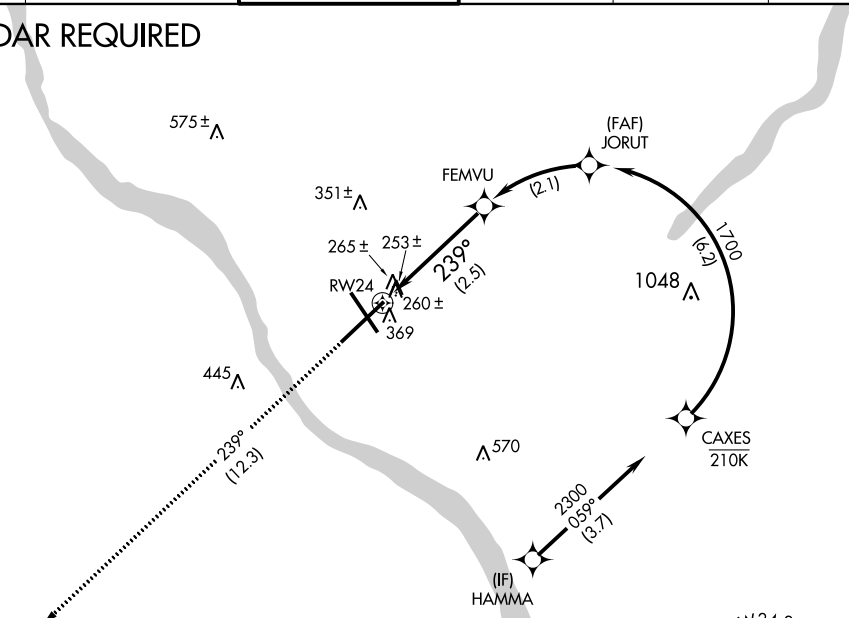
TRENTON MERCER (TTN)

**▼** For uncompensated Baro-VNAV systems, procedure NA below -13°C (8°F) or above 54°C (130°F).  
When VGSI inop, procedure NA at night.  
RF required.  
GPS required.

MISSED APPROACH: Climb to 2700 on track 239° to ZUBAX and hold.

ATIS <b>126.775</b>	PHILADELPHIA APP CON <b>123.8 291.7</b>	TRENTON TOWER ★ <b>120.7 (CTAF) 0 257.8</b>	GND CON <b>121.9 257.8</b>	CLNC DEL <b>121.9 257.8</b>	UNICOM <b>122.95</b>
------------------------	--	--	-------------------------------	--------------------------------	-------------------------

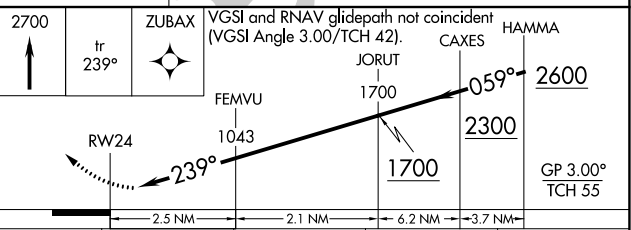
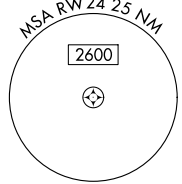
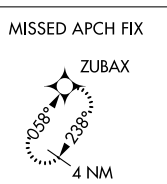
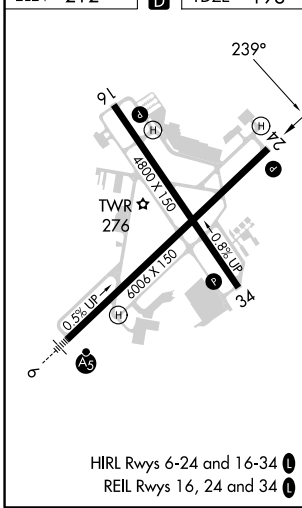
## RADAR REQUIRED



NE-2, 28 NOV 2024 to 26 DEC 2024

NE-2, 28 NOV 2024 to 26 DEC 2024

ELEV 212	<b>D</b>	TDZE 193
----------	----------	----------



CATEGORY	A	B	C	D
RNP 0.10 DA		641-1½	448 (500-1½)	
RNP 0.30 DA		741-1½	548 (600-1½)	

**AUTHORIZATION REQUIRED**