

APP CRS	Rwy Idg	<b>6006</b>
<b>058°</b>	TDZE	<b>186</b>
	Apt Elev	<b>212</b>

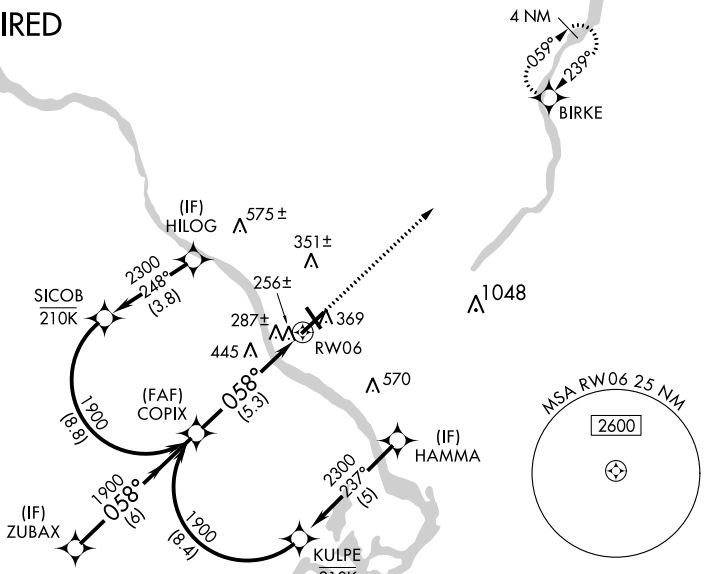
# RNAV (RNP) Y RWY 6

TRENTON MERCER (TTN)

<p>▼ For uncompensated Baro-VNAV systems, procedure NA below -13°C (8°F) or above 54°C (130°F). GPS required.</p> <p>For inoperative MALSR, increase RNP 0.10 DA all Cats visibility to 1 mile, increase RNP 0.30 DA all Cats visibility to 1½ mile.</p>	<p>MALSR</p>	<p>MISSED APPROACH: Climb to 2600 direct BIRKE and hold.</p>

ATIS	PHILADELPHIA APP CON	TRENTON TOWER*	GND CON	CLNC DEL	UNICOM
<b>126.775</b>	<b>123.8 291.7</b>	<b>120.7 (CTAF) 0 257.8</b>	<b>121.9 257.8</b>	<b>121.9 257.8</b>	<b>122.95</b>

## RADAR REQUIRED



NE-2, 28 NOV 2024 to 26 DEC 2024

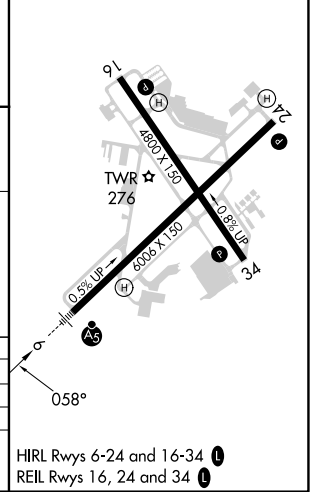
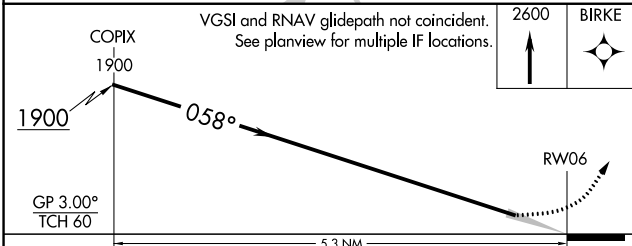
NE-2, 28 NOV 2024 to 26 DEC 2024

ELEV 212	<b>D</b>	TDZE 186
----------	----------	----------

COPIX 1900

VGSI and RNAV glidepath not coincident. See planview for multiple IF locations.

2600 BIRKE



CATEGORY	A	B	C	D
RNP 0.10 DA		510-½	324 (300-½)	
RNP 0.30 DA		668-1½	482 (500-1½)	

## AUTHORIZATION REQUIRED

HIRL Rws 6-24 and 16-34

REIL Rws 16, 24 and 34