

LOC/DME I-MFE <b>111.7</b> Chan <b>54</b>	APP CRS <b>137°</b>	Rwy Idg <b>6983</b> TDZE <b>107</b> Apt Elev <b>107</b>
---	------------------------	---

# ILS or LOC RWY 14

MC ALLEN INTL (MF'E)

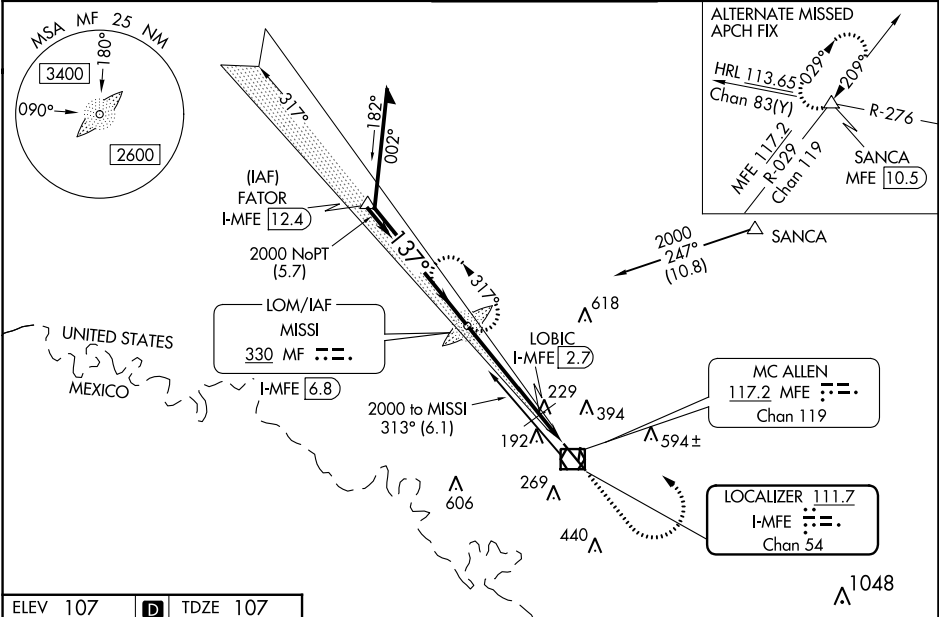
ADF required.

▼ Circling NA northeast of Rwy 14-32. When local altimeter setting not received, use Weslaco altimeter setting: increase all DA 39 feet; increase all MDA 40 feet and S-LOC 14 Cat C/D and Circling Cat C visibility 1/8 mile, increase LOBIC Fix Minimums S-LOC 14 Cat C/D visibility 1/4 mile. For inop ALS, increase S-LOC 14 Cat C/D visibility to 1 1/8 SM. For inop ALS when using Weslaco altimeter setting, increase LOBIC Fix Minimums S-LOC 14 Cat C/D visibility to 1 1/8 SM.

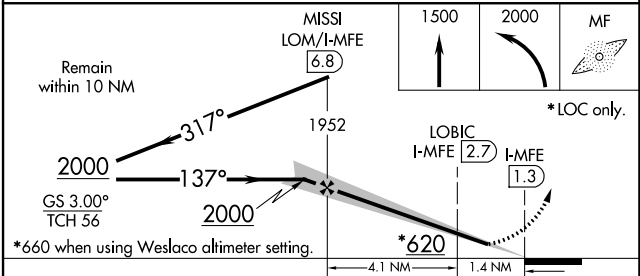
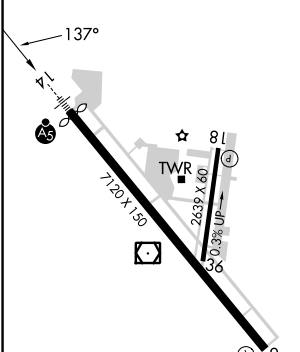


MISSED APPROACH:  
Climb to 1500 then climbing left turn to 2000 direct to MISSI LOM and hold.

ATIS <b>128.5</b>	VALLEY APP CON <b>126.55 377.2</b>	MC ALLEN TOWER ★ <b>118.5 (CTAF) 256.9</b>	GND CON <b>121.8</b>	UNICOM <b>122.95</b>
----------------------	---------------------------------------	---	-------------------------	-------------------------



ELEV 107	D	TDZE 107
----------	---	----------



CATEGORY	A	B	C	D
S-ILS 14	307-1/2 200 (200-1/2)			
S-LOC 14	620-1/2	513 (600-1/2)	620-1	513 (600-1)
CIRCLING	620-1	513 (600-1)	620-1 1/2 513 (600-1 1/2)	800-2 1/4 693 (700-2 1/4)
LOBIC FIX MINIMUMS				
S-LOC 14	540-1/2	433 (500-1/2)	540-3/4	433 (500-3/4)
CIRCLING	580-1	473 (500-1)	580-1 1/2 473 (500-1 1/2)	800-2 1/4 693 (700-2 1/4)

FAF to MAP 5.5 NM					
Knots	60	90	120	150	180
Min:Sec	5:30	3:40	2:45	2:12	1:50

SC-3, 28 NOV 2024 to 26 DEC 2024

SC-3, 28 NOV 2024 to 26 DEC 2024