

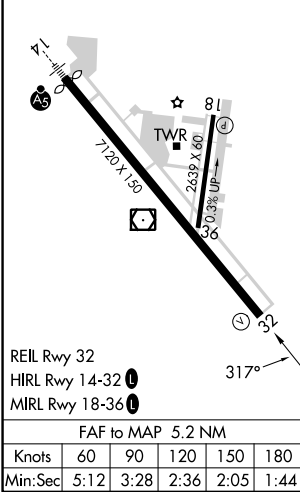
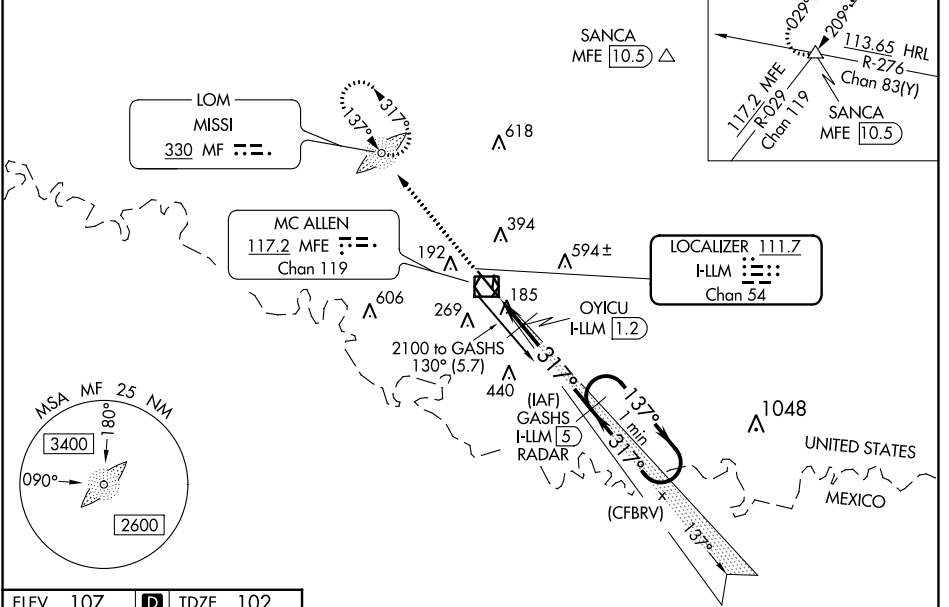
LOC/DME I-LLM 111.7 Chan 54	APP CRS 317°	Rwy Idg 7120 TDZE 102 Apt Elev 107
---	------------------------	---

ILS or LOC RWY 32

MC ALLEN INTL (MF'E)

<p>⚠ Circling NA northeast of Rwy 14-32. ADF and DME or Radar required. When local altimeter setting not received, use Weslaco altimeter setting: increase all DA 39 feet and MDA 40 feet.</p>		<p>MISSED APPROACH: Climb to 2100 direct MF LOM and hold</p>		
<p>ATIS 128.5</p>	<p>VALLEY APP CON 126.55 377.2</p>	<p>MC ALLEN TOWER ★ 118.5 (CTAF) 0 256.9</p>	<p>GND CON 121.8</p>	<p>UNICOM 122.95</p>

DME or RADAR REQUIRED



SC-3, 28 NOV 2024 to 26 DEC 2024

SC-3, 28 NOV 2024 to 26 DEC 2024