

TACAN NIP Chan <b>19</b> (108.2)	APP CRS <b>269°</b>	Rwy Idg <b>8003</b> TDZE <b>72</b> Apt Elev <b>80</b>
--	------------------------	---

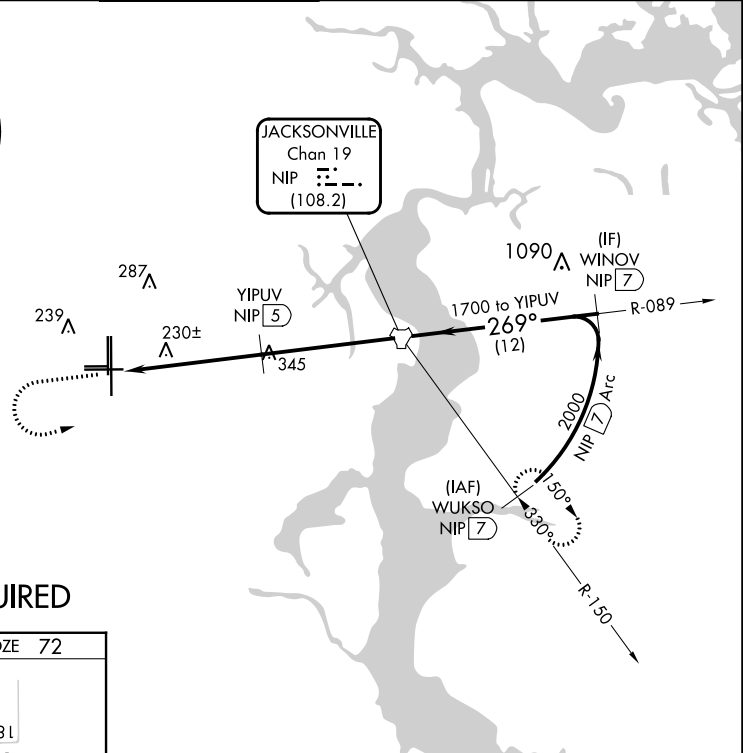
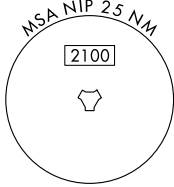
# TACAN RWY 27L

CECIL (VQQ)

**V** VDP NA with Jacksonville Intl altimeter setting. Helicopter visibility reduction below 3/4 SM NA. When local altimeter setting not received, use Jacksonville Intl altimeter setting and increase all MDA 60 feet, increase S-27L Cats C, D, E visibility 1/8 mile.

**MISSED APPROACH:** Climb to 700 then climbing left turn to 2100 direct NIP TACAN and continue on NIP TACAN R-150 to WUKSO/7 DME and hold.

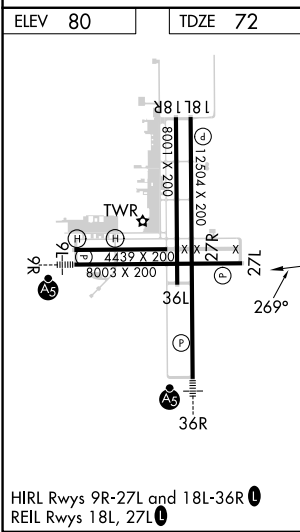
ATIS <b>125.275</b>	JACKSONVILLE APP CON <b>127.775 377.075</b>	CECIL TOWER* <b>126.1 (CTAF) 235.625</b>	GND CON <b>121.625 226.675</b>	CLNC DEL <b>123.975 254.25</b>	GCO <b>135.075</b>
------------------------	--	---	-----------------------------------	-----------------------------------	-----------------------



SE-3, 28 NOV 2024 to 26 DEC 2024

SE-3, 28 NOV 2024 to 26 DEC 2024

## RADAR REQUIRED



700	2100	NIP	NIP R-150	WUKSO NIP 7	VGSI and descent angles not coincident (VGSI Angle 3.00/TCH 67).	
↑	↙	⬠	⬠	⬠		
CATEGORY		A	B	C	D	E
S-27L		540-1	468 (500-1)	540-1 3/8	468 (500-1 3/8)	
CIRCLING		540-1 460 (500-1)	560-1 480 (500-1)	600-1 1/2 520 (600-1 1/2)	640-2 560 (600-2)	900-3 820 (900-3)