

NDB ICW 525	APP CRS 051°	Rwy Idg TDZE Apt Elev	4600 368 368
-----------------------	------------------------	-----------------------------	---

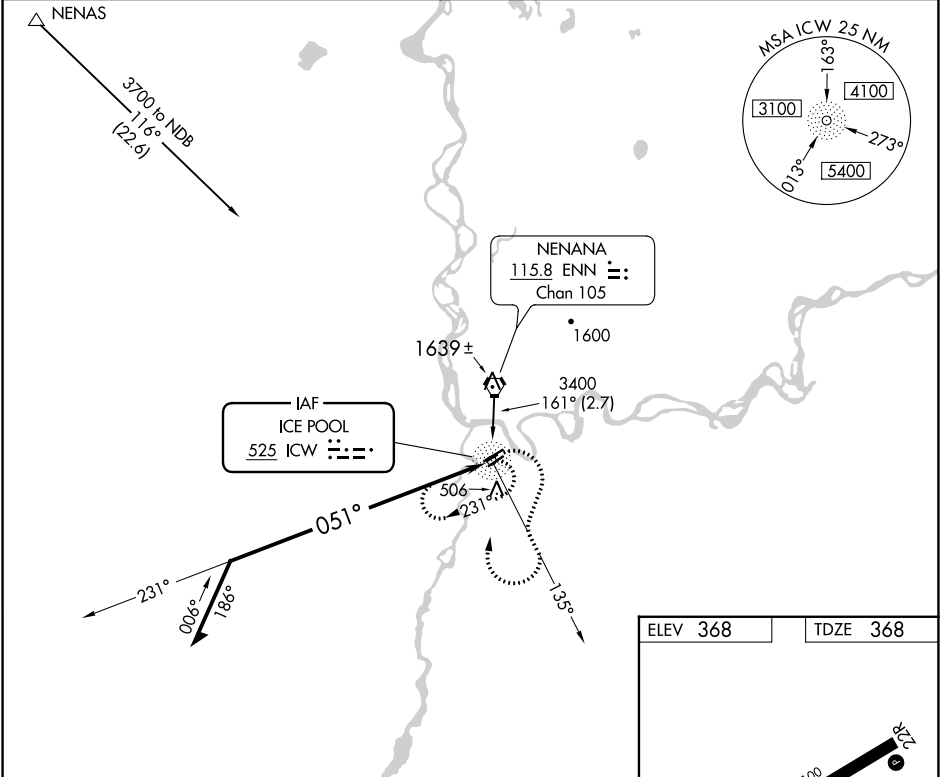
NDB RWY 4L

NENANA MUNI (ENN)(PANN)

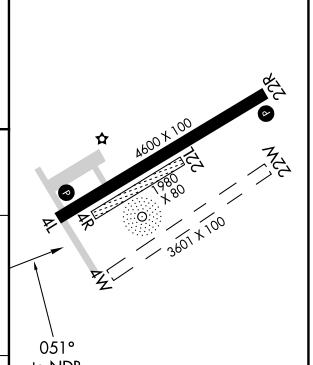
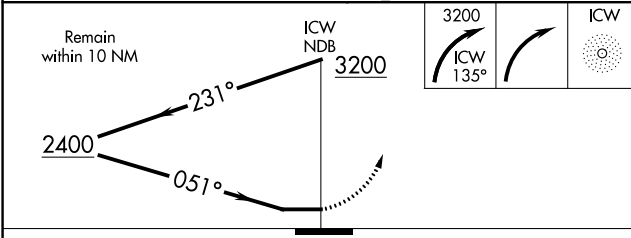
⚠ Circling NA northwest of Rwy 4L-22R. When local altimeter setting not received, use Fairbanks Intl altimeter setting and increase all MDAs 100 feet and S-4L Cat C and Circling Cats C/D visibility ¼ SM. Procedure NA at night. Circling NA to Rwys 4R, 22L, 4W and 22W. Rwy 4L helicopter visibility reduction below 1 SM NA.

MISSED APPROACH: Climbing right turn to 3200 on ICW NDB 135° bearing, then right turn direct ICW NDB and hold.

ASOS 125.2	FAIRBANKS APP CON 125.35 363.2	FAIRBANKS RADIO 122.5	CTAF 122.1
----------------------	--	---------------------------------	----------------------



ELEV 368	TDZE 368
----------	----------



CATEGORY	A	B	C	D
S-4L	1000-1	632 (700-1)	1000-1¾ 632 (700-1¾)	1000-2 632 (700-2)
CIRCLING	1000-1	632 (700-1)	1180-2½ 812 (900-2½)	1180-2¾ 812 (900-2¾)

MIRL Rwys 4L-22R and 4R-22L
REIL Rwys 4L and 22R

AK, 31 OCT 2024 to 26 DEC 2024

AK, 31 OCT 2024 to 26 DEC 2024