

GALENA, ALASKA

AL-1229 (FAA)

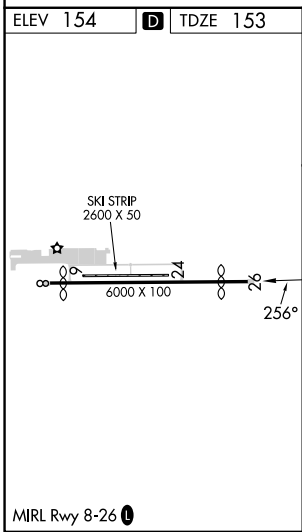
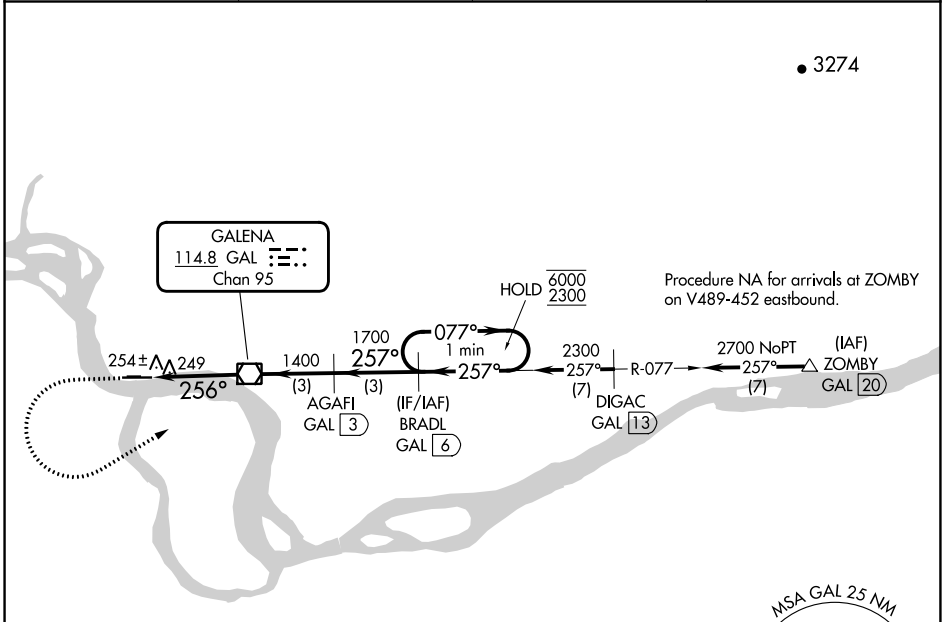
23278

VOR/DME GAL 114.8 Chan 95	APP CRS 256°	Rwy Idg TDZE Apt Elev	5200 153 154
---	------------------------	-----------------------------	---

VOR RWY 26

EDWARD G PITKA SR (GAL)(PAGA)

DME required.		MISSED APPROACH: Climb to 600 then climbing left turn to 2300 on heading 047° and GAL VOR/DME R-077 to BRADL/6 DME and hold.	
AWOS-3P 132.525	ANCHORAGE CENTER 127.0 290.2	FAIRBANKS RADIO 122.2	CTAF 123.0



ELEV 154	D	TDZE 153				
600	2300	GAL R-077	BRADL GAL [6]	AGAFI GAL [3]	BRADL GAL [6]	One Minute Holding Pattern
hdg 047°	077°	257°	257°	1700	256°	256°
GAL [2.7]	GAL [3.7]	GAL VOR/DME	GAL [6]	GAL [3]	GAL [6]	GAL [6]
0.9	2.7 NM	3 NM	3 NM	3 NM	3 NM	3 NM
CATEGORY	A	B	C	D		
S-26	520-1 367 (400-1)					
CIRCLING	560-1 406 (500-1)	620-1 466 (500-1)	620-1½ 466 (500-1½)	740-2 586 (600-2)		

GALENA, ALASKA
Orig 05OCT23

64°44'N-156°56'W

VOR RWY 26

EDWARD G PITKA SR (GAL)(PAGA)

AK, 31 OCT 2024 to 26 DEC 2024

AK, 31 OCT 2024 to 26 DEC 2024