

| | | | |
|---------------|-------------|--------------|------|
| LOC/DME I-OME | APP CRS | Rwy Ldg TDZE | 6009 |
| 108.7 | 279° | 25 | |
| Chan 24 | | Apt Elev | 41 |

ILS Z or LOC Z RWY 28

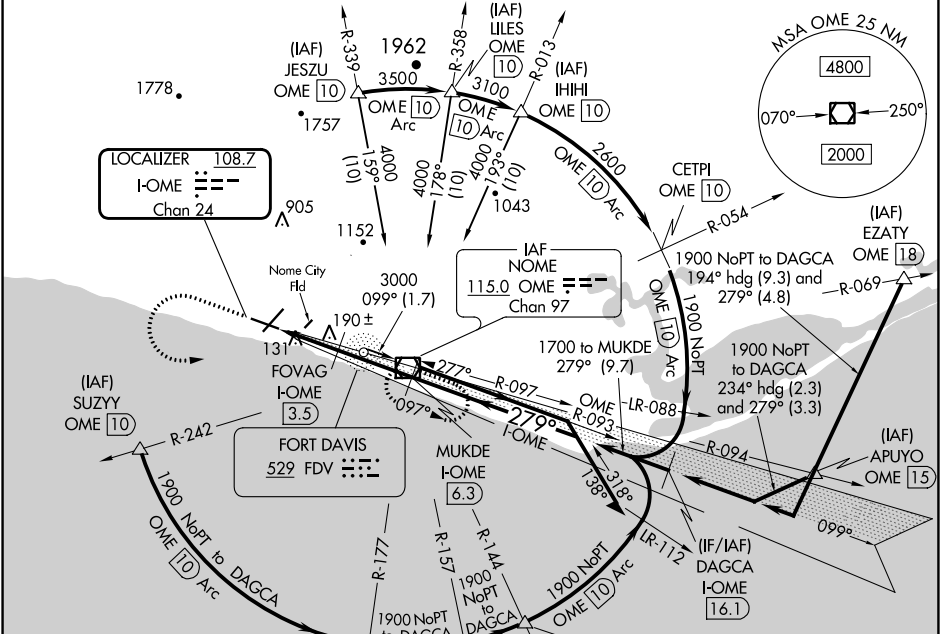
NOME(OME)(PAOM)

DME required.

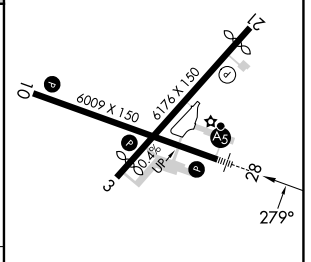
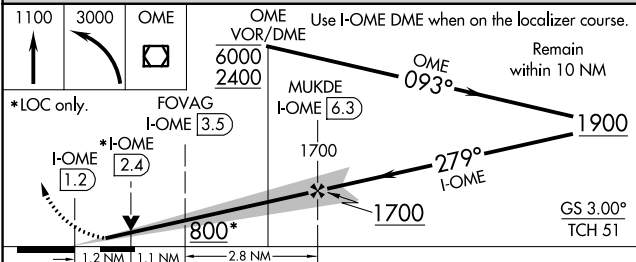
MAJLSR MISSED APPROACH: Climb to 1100 then climbing left turn to 3000 direct OME VOR/DME and hold, continue climb-in-hold to 3000.

1 Circling Rwy 21 NA at night. Circling NA for Cats C and D north of Rwy 10-28. Inop table does not apply to S-ILS 28 all Cats and S-LOC 28 Cats A and B. For inop ALS, increase S-LOC 28 Cats C and D to RVR 6000.

| | | |
|----------------|--------------------|-----------------------|
| AFIS | ANCHORAGE CENTER | NOME RADIO |
| 119.925 | 133.3 290.4 | 123.6 (CTAF) 0 |



| | | | |
|------|----|---------------|----|
| ELEV | 41 | D TDZE | 25 |
|------|----|---------------|----|



| CATEGORY | A | B | C | D |
|-------------------|-------|-------------|------------------------|----------------------|
| S-ILS 28 | | 275/50 | 250 (300-1) | |
| S-LOC 28 | | 440/50 | 415 (400-1) | |
| C CIRCLING | 540-1 | 499 (500-1) | 540-1½ 499 (500-1½) | 700-2 659 (700-2) |

REIL Rwy 3 and 10 **0**
 HIRL Rwy 10-28 **0**
 MIRL Rwy 3-21 **0**

AK, 31 OCT 2024 to 26 DEC 2024

AK, 31 OCT 2024 to 26 DEC 2024