

NOME, ALASKA

AL-1231 (FAA)

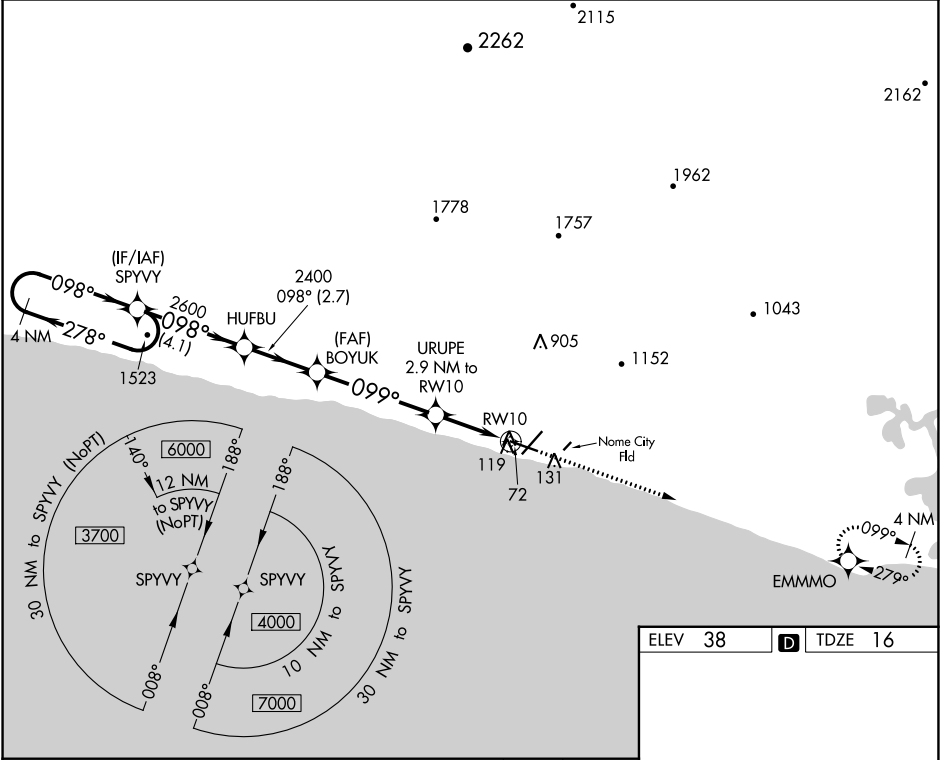
23222

WAAS CH 40434 W10A	APP CRS 099°	Rwy Idg 6009 TDZE 16 Apt Elev 38
--	------------------------	---

RNAV (GPS) RWY 10

NOME (OME)(PAOM)

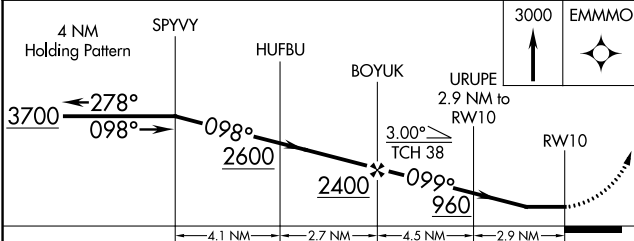
<p>▽ DME/DME RNP-0.3 NA. Helicopter visibility reduction below 1 SM NA. Night Landing: Rwy 21 NA, Rwy 10 operational VGSI required, remain on or above VGSI glidepath until threshold. Circling NA for Cats C and D north of Rwy 10-28.</p>		MISSED APPROACH: Climb to 3000 direct EMMMO and hold.
AFIS 119.925	ANCHORAGE CENTER 133.3 290.4	NOME RADIO 123.6 (CTAF) 1



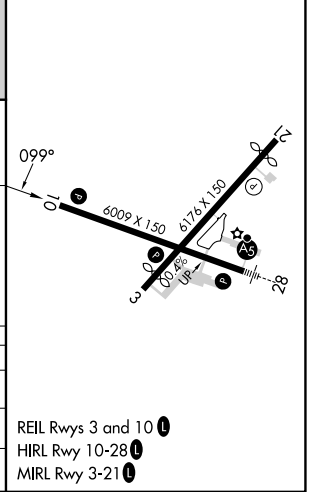
AK, 31 OCT 2024 to 26 DEC 2024

AK, 31 OCT 2024 to 26 DEC 2024

ELEV 38	D TDZE 16
---------	------------------



CATEGORY	A	B	C	D
LP MDA		340-1	324 (400-1)	
LNAV MDA		380-1	364 (400-1)	
C CIRCLING	540-1	502 (600-1)	540-1½ 502 (600-1½)	700-2 662 (700-2)



NOME, ALASKA
Amdt 2 13NOV14

64°31'N-165°27'W

RNAV (GPS) RWY 10

NOME (OME)(PAOM)