

APP CRS 031°	Rwy Idg 5576
	TDZE 25
	Apt Elev 38

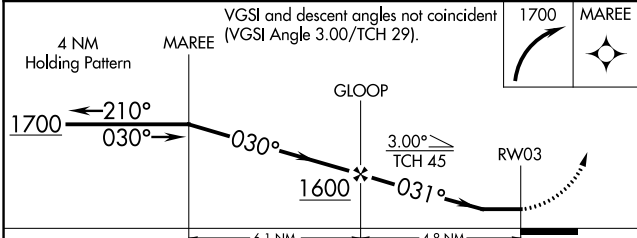
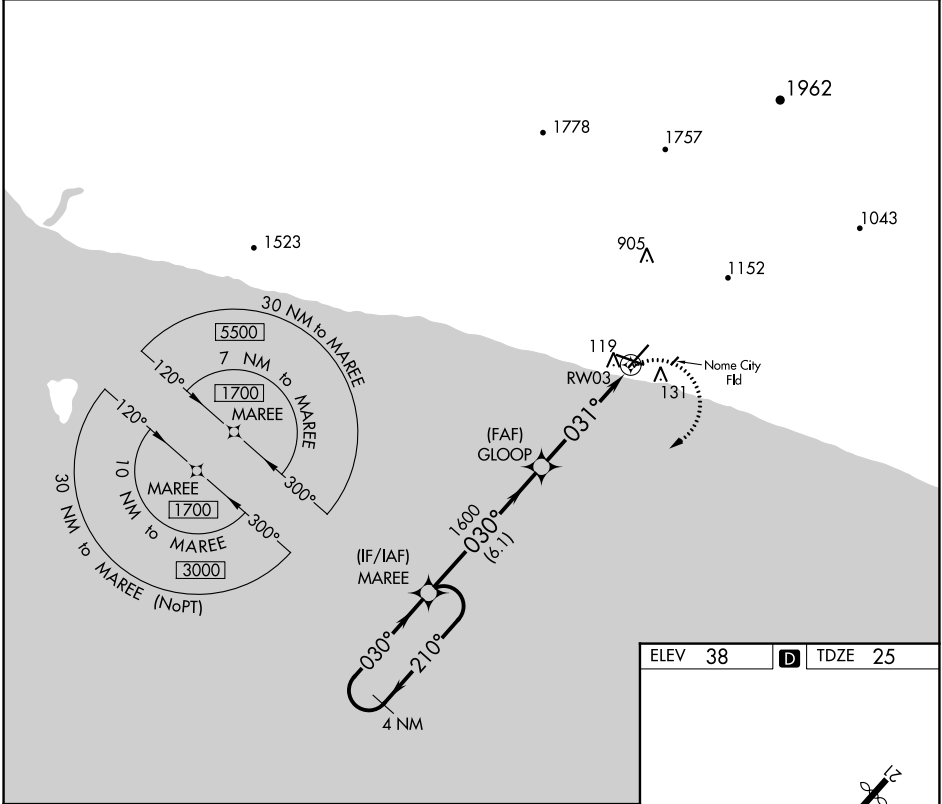
RNAV (GPS) RWY 3

NOME (OME)(PAOM)

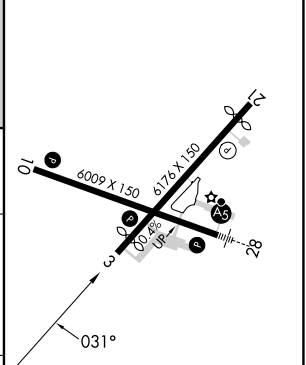
⚠ DME/DME RNP-0.3 NA. Helicopter visibility reduction below 1 SM NA. Night landing: Rwy 21 NA.
Circling NA for Cats C and D north of Rwy 10-28.

MISSED APPROACH: Climbing right turn to 1700 direct MAREE and hold.

AFIS 119.925	ANCHORAGE CENTER 133.3 290.4	NOME RADIO 123.6 (CTAF) Ⓛ
------------------------	--	--



ELEV 38	D TDZE 25
---------	------------------



CATEGORY	A	B	C	D
LNVA MDA	440-1	415 (500-1)	440-1¼	415 (500-1¼)
C CIRCLING	540-1	502 (600-1)	540-1½	700-2 662 (700-2)

REIL Rwy 3 and 10 **Ⓛ**
HIRL Rwy 10-28 **Ⓛ**
MIRL Rwy 3-21 **Ⓛ**

AK, 31 OCT 2024 to 26 DEC 2024

AK, 31 OCT 2024 to 26 DEC 2024