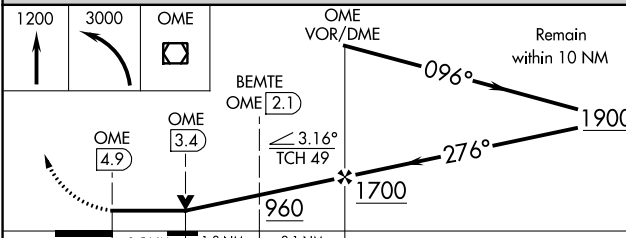
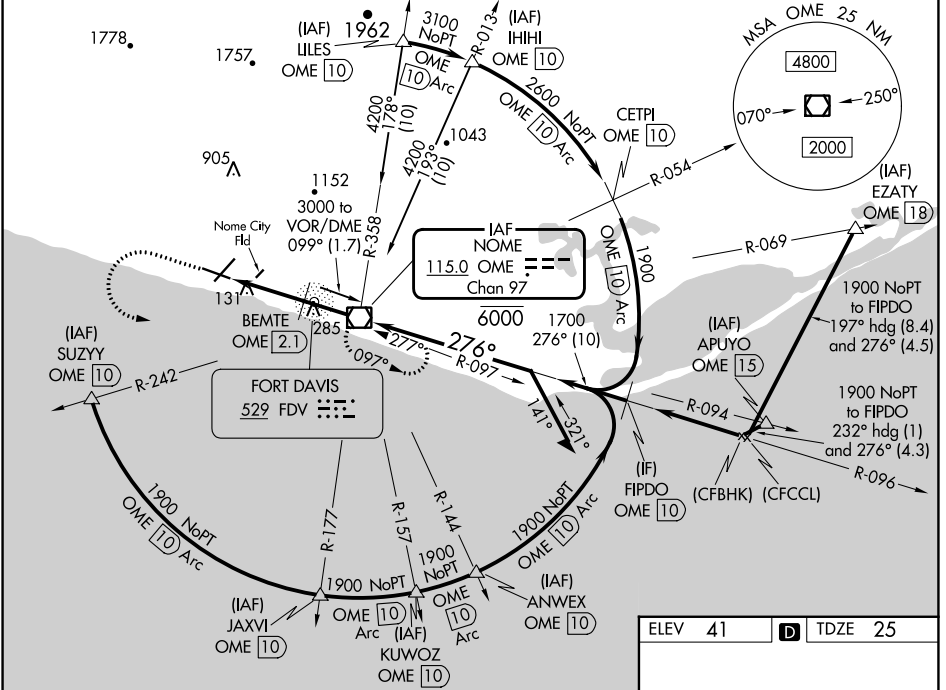


VOR/DME OME 115.0 Chan 97	APP CRS 276°	Rwy Idg 6009 TDZE 25 Apt Elev 41
--	------------------------	---

VOR RWY 28

NOME (OME)(PAOM)

<p>⚠ For inop ALS, increase S-28 BEMTE fix minimums Cat A/B visibility to RVR 5000, increase Cat C/D visibility to 1 3/8 SM. Circling NA for Cats C and D north of Rwy 10-28. Circling Rwy 21 NA at night. Rwy 28 helicopter visibility reduction below RVR 4000 NA.</p>	<p>MALSR</p>	<p>MISSED APPROACH: Climb to 1200 then climbing left turn to 3000 direct OME VOR/DME and hold, continue climb-in-hold to 3000.</p>
<p>AFIS 119.925</p>	<p>ANCHORAGE CENTER 133.3 290.4</p>	<p>NOME RADIO 123.6 (CTAF) 0</p>



CATEGORY	A	B	C	D
S-28	960/40	935 (1000-3/4)	960-2	935 (1000-2)
C CIRCLING	960-1 1/4	919 (1000-1 1/4)	960-2 3/4	960-3
			919 (1000-2 3/4)	919 (1000-3)
BEMTE FIX MINIMUMS				
S-28	540/40	515 (500-3/4)	540/55	515 (500-1)
C CIRCLING	540-1	499 (500-1)	540-1 1/2	700-2
			499 (500-1 1/2)	659 (700-2)

ELEV 41	D TDZE 25
---------	------------------

REIL Rwys 3 and 10 **0**
 HIRL Rwy 10-28 **0**
 MIRL Rwy 3-21 **0**

FAF to MAP 4.9 NM					
Knots	60	90	120	150	180
Min:Sec	4:54	3:16	2:27	1:58	1:38

AK, 31 OCT 2024 to 26 DEC 2024

AK, 31 OCT 2024 to 26 DEC 2024