

LOC/DME I-AKN <b>110.3</b> Chan <b>40</b>	APP CRS <b>121°</b>	Rwy Idg TDZE <b>62</b> Apt Elev <b>73</b>	<b>8501</b>
---	------------------------	---	-------------

# ILS Y or LOC Y RWY 12

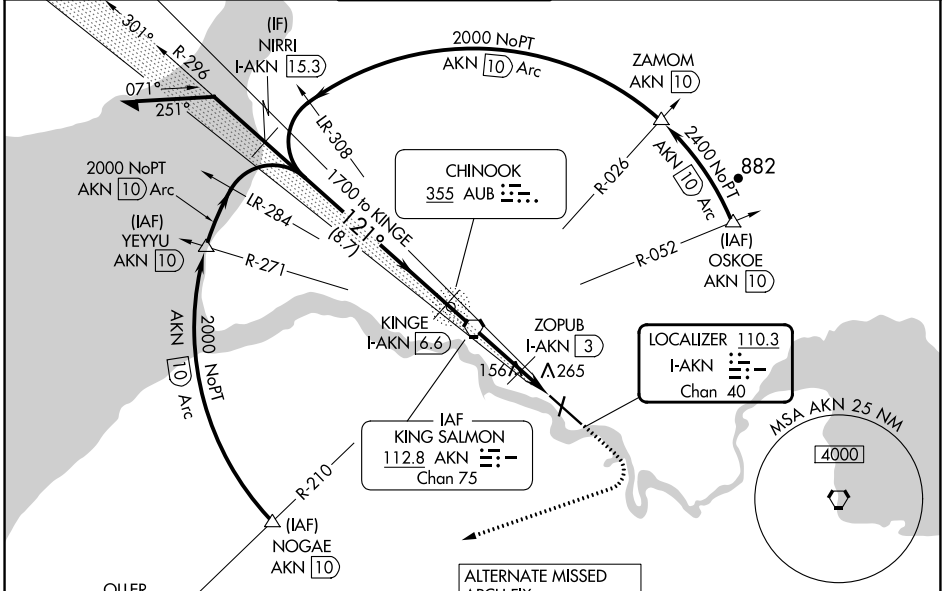
KING SALMON (AKN)(PAKN)

**DME required.**

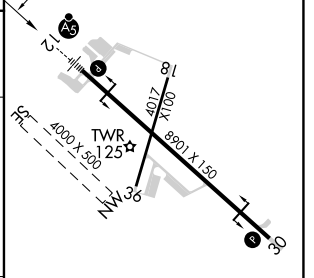
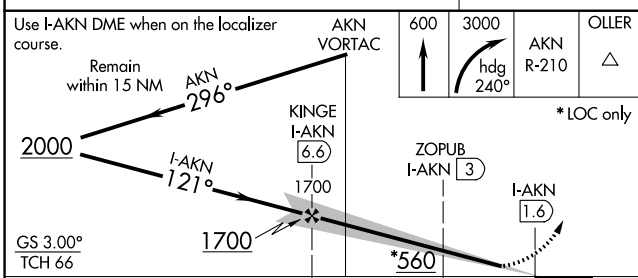
**Autopilot coupled approach NA below 700. For inop ALS, increase S-ILS 12 Cat E visibility to RVR 4000. For inop ALS, increase S-LOC 12 Cat C-E visibility to RVR 5500. When control tower closed: increase S-ILS 12 and S-LOC 12 visibilities to RVR 5000 all Cats. When control tower closed, inop table does not apply.**

**MALSRL** MISSED APPROACH: Climb to 600 then climbing right turn to 3000 on heading 240° and AKN VORTAC R-210 to OLLER/15 DME and hold.

ATIS <b>128.8</b>	ANCHORAGE CENTER <b>124.8 354.0</b>	KING SALMON TOWER* <b>118.3 279.5</b>	GND CON <b>121.9</b>	UNICOM <b>122.95</b>	CTAF <b>121.9 352.05</b>
----------------------	--	--	-------------------------	-------------------------	-----------------------------



ELEV 73	TDZE 62
---------	---------



CATEGORY	A	B	C	D	E
S-ILS 12	262/24 200 (200-½)				
S-LOC 12	420/24	358 (400-½)	420/30	358 (400-¾)	

MIRL Rwy 18-36  
HIRL Rwy 12-30

AK, 31 OCT 2024 to 26 DEC 2024

AK, 31 OCT 2024 to 26 DEC 2024