

WAAS CH 72608 W12A	APP CRS 121°	Rwy Idg TDZE 62 Apt Elev 73
--	------------------------	---

RNAV (GPS) RWY 12

KING SALMON (AKN)(PAKN)

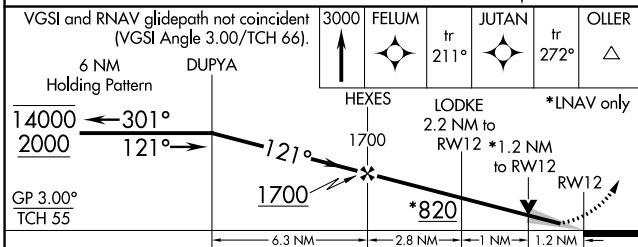
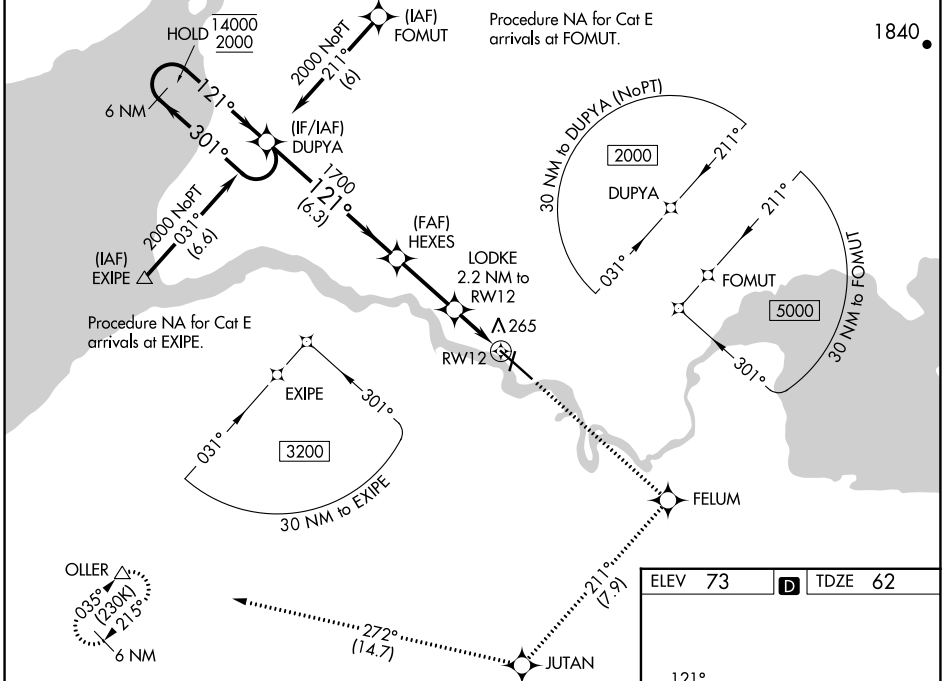
RNP APCH-GPS.

⚠ For uncompensated Baro-VNAV systems, procedure NA below -18°C or above 54°C.
⚠ For inop ALS, increase LPV Cat E visibility to RVR 4000, increase LNAV/VNAV all Cats visibility to RVR 5000 and increase LNAV Cat E visibility to 1½ SM. When control tower closed, LPV, LNAV/VNAV and LNAV visibility RVR 5000. When control tower closed, inop table does not apply to LPV, LNAV/VNAV and LNAV Cats A/B.
 # RVR 1800 authorized with use of FD or AP or HUD to DA (NA when control tower closed).

MALS R

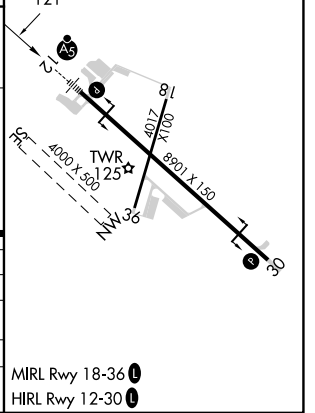
MISSED APPROACH: Climb to 3000 direct FELUM and on track 211° to JUTAN and on track 272° to OLLER and hold.

ATIS 128.8	ANCHORAGE CENTER 124.8 354.0	KING SALMON TOWER* 118.3 279.5	GND CON 121.9	UNICOM 122.95	CTAF 121.9 352.05
----------------------	--	--	-------------------------	-------------------------	-----------------------------



ELEV 73	D	TDZE 62
---------	---	---------

CATEGORY	A	B	C	D	E
LPV DA#		262/24	200 (200-½)		
LNAV/VNAV DA		426/35	364 (400-¾)		
LNAV MDA	520/24	458 (500-½)	520/45	458 (500-¾)	
CIRCLING	580-1	507 (600-1)	580-1½ 507 (600-1½)	900-2¾ 827 (900-2¾)	960-3 887 (900-3)



AK, 31 OCT 2024 to 26 DEC 2024

AK, 31 OCT 2024 to 26 DEC 2024