

24081  
CABNN THREE DEPARTURE  
(OBSTACLE) (RNAV) (CABNN3•ROGOC)

[USAF]

CAPE NEWENHAM (PAEH)  
CAPE NEWENHAM, ALASKA

RNAVI - GPS

ANCHORAGE CENTER  
124.2 251.1  
CAPE NEWENHAM RADIO  
126.2

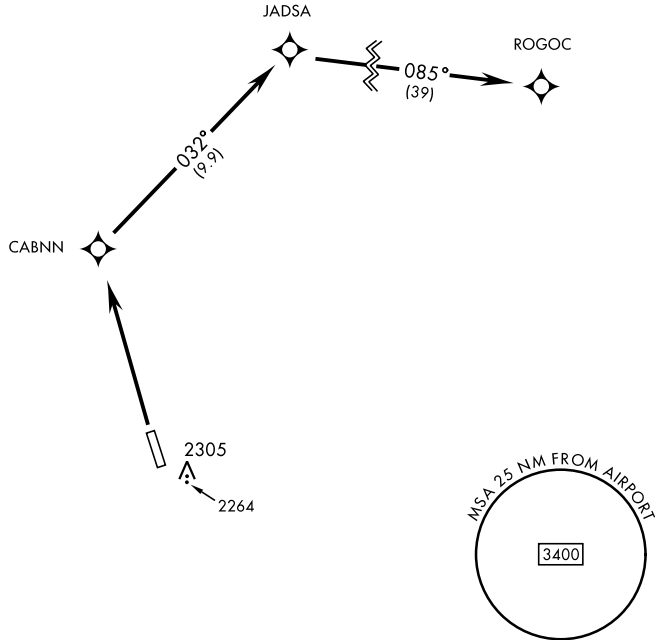
# MILITARY CERTIFIED AIRCREWS OR AUTHORIZED CONTRACT AIRCRAFT ONLY

## NOT FOR CIVIL USE

Uncontrolled Airspace below 700' AGL  
within 7 NM of Cape Newenham airport.

Night operations not authorized.

CAUTION:  
High terrain both sides and south  
end of runway.



AK, 31 OCT 2024 to 26 DEC 2024

AK, 31 OCT 2024 to 26 DEC 2024



### DEPARTURE ROUTE DESCRIPTION

TAKEOFF RWY 15: NA

TAKEOFF RWY 33: Climb to 5000 direct CABNN, then via track 032° to JADSA, then via track 085° to ROGOC, join T223.

CABNN THREE DEPARTURE  
(OBSTACLE) (RNAV) (CABNN3•ROGOC)  
Orig 21MAR24

CAPE NEWENHAM, ALASKA  
CAPE NEWENHAM (PAEH)