

CAPE NEWENHAM, ALASKA

# RNAV (GPS) RWY 15

APCH CRS <b>172°</b>	Rwy Idg <b>3945</b>
	TDZE <b>456</b>
	Arprt Elev <b>531</b>

- (USAF)

CAPE NEWENHAM LRRS (PAEH)

RNP APCH	MISSED APPROACH: Climbing right turn to 3500 direct WAGEN and hold.
----------	---

ANCHORAGE CENTER <b>124.2 251.1</b>	RADIO <b>126.2 (CTAF)</b>
--	------------------------------

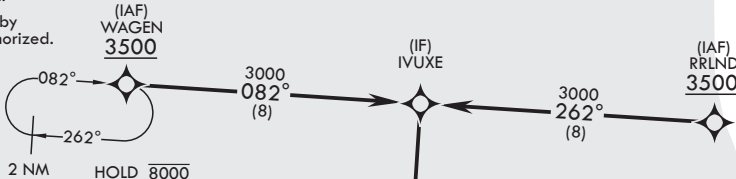
Straight-in Rwy 15 at night, operational VGSI required, remain on or above VGSI glidepath until threshold.

USAF Only: When VGSI inop, straight-in Rwy 15 authorized at night with command approval.

Visibility reduction by helicopters not authorized.

**CAUTION:**

- Rwy located on slope of 2306' mountain. High terrain both sides and S end of rwy.
- Successful go-around improbable if initiated past the MAP.



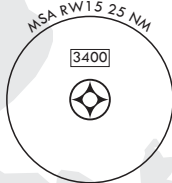
Unlit terrain 235' MSL, 200' from threshold, 200' left of course.

Uncontrolled Airspace below 700' AGL within 7 NM of Cape Newenham airport.

## NOT FOR CIVIL USE

## MILITARY CERTIFIED AIRCREWS OR AUTHORIZED CONTRACT AIRCRAFT ONLY

EMERG SAFE ALT 100 NM 7100



3500	WAGEN	VGSI and descent angles not coincident (VGSI Angle 3.00°/TCH 45).	IVUXE	ELEV 531	TDZE 456
CATEGORY	A	B	C	D	Land Rwy 15 Tkof Rwy 33
LNAV MDA	1260-3	804	(800-3)	NA	
CIRCLING	NOT AUTHORIZED				REIL Rwy 15

CAPE NEWENHAM, ALASKA

58°39'N - 162°04'W

CAPE NEWENHAM LRRS (PAEH)

Amdt 4 25JAN24

# RNAV (GPS) RWY 15

AK, 31 OCT 2024 to 26 DEC 2024

AK, 31 OCT 2024 to 26 DEC 2024