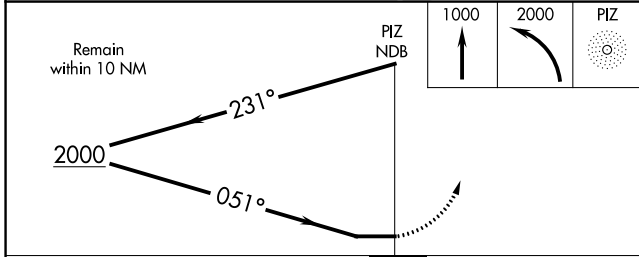
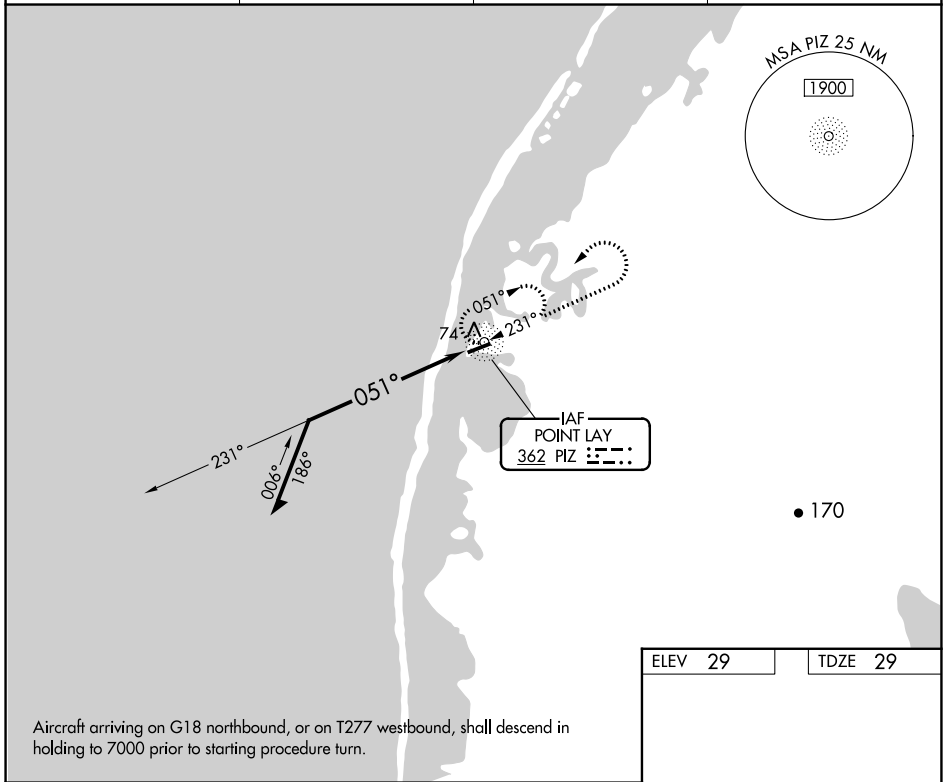


NDB PIZ 362	APP CRS 051°	Rwy Idg 4500 TDZE 29 Apt Elev 29
-----------------------	------------------------	---

NDB RWY 5

POINT LAY LRRS (PIZ) (PPIZ)

-33°C		MISSED APPROACH: Climb to 1000, then climbing left turn to 2000 direct PIZ NDB and hold.	
AWOS-3P 135.65	ANCHORAGE CENTER 119.65 363.25	BARROW RADIO 122.4	CTAF 122.8



ELEV 29	TDZE 29
---------	---------

A diagram of Runway 5, showing its orientation and dimensions (4500 X 100). The runway heading is 051°. A box indicates 'MIRL Rwy 5-23' and 'REIL Rwys 5 and 23'.

CATEGORY	A	B	C	D
S-5	500-1 471 (500-1)		500-1 ¼ 471 (500-1 ¼)	NA
CIRCLING	500-1 471 (500-1)		500-1 ½ 471 (500-1 ½)	NA

AK, 31 OCT 2024 to 26 DEC 2024

AK, 31 OCT 2024 to 26 DEC 2024