

RNAV (GPS) RWY 22

APCH CRS	Rwy Idg	4499
219°	TDZE	14
	Arpt Elev	14

[USA]

DYESS AAF (PKRO)

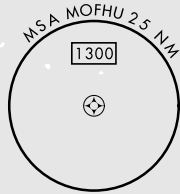
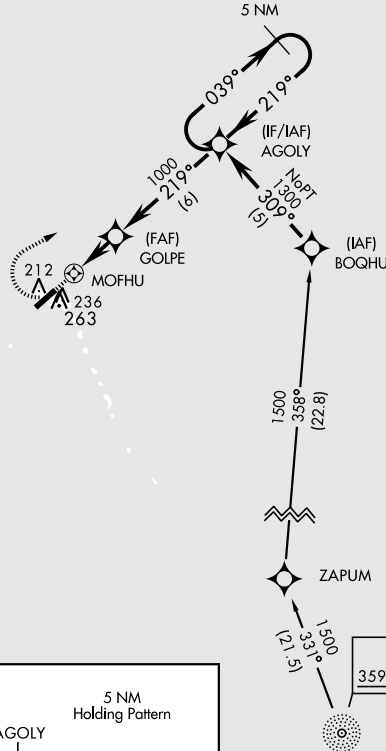
RNP APCH - GFS
▲ NA * Circling not authorized E of Rwy 04-22.

MISSED APPROACH: Climbing right turn to 1300 direct AGOLY and hold.

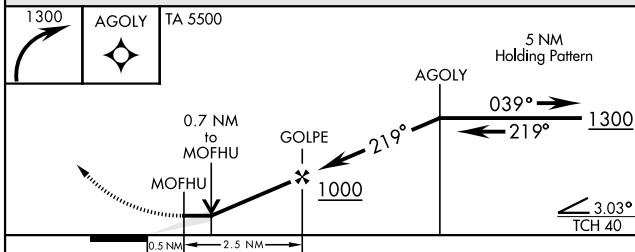
AWOS 119.0	BUCHHOLZ TOWER ★ 126.2 360.2	ROI RDO 118.8	CTAF 118.1
----------------------	----------------------------------------	-------------------------	----------------------

Procedure not authorized at night except by prior arrangement for runway lights.

Obtain local altimeter setting on CTAF. When not received, use Buchholz AAF altimeter setting. Dyess Advisory 118.1

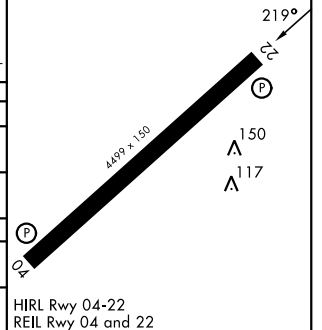


NOT FOR CIVIL USE



ELEV	14	TDZE	14
------	----	------	----

CATEGORY	A	B	C	D
RNAV MDA	580-1	566 (600-1)	580-1½ 566 (600-1½)	NOT AUTHORIZED
CIRCLING*	580-1	566 (600-1)	580-1½ 566 (600-1½)	NOT AUTHORIZED
BUCHHOLZ AAF ALTIMETER SETTING MINIMUMS				
RNAV MDA	680-1	666 (700-1)	680-1½ 666 (700-1½)	NOT AUTHORIZED
CIRCLING*	680-1	666 (700-1)	680-1½ 666 (870-1½)	NOT AUTHORIZED



RNAV (GPS) RWY 22

PAC, 31 OCT 2024 to 26 DEC 2024

PAC, 31 OCT 2024 to 26 DEC 2024