

KWAJALEIN USAKA, MARSHALL I

RNAV (GPS) RWY 04

APCH CRS 039°	Rwy Idg 4499
	TDZE 14
	Arprt Elev 14

[USA]

DYESS AAF (PKRO)

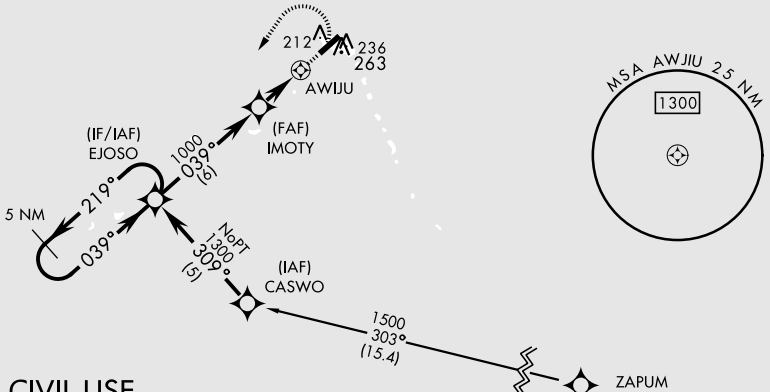
RNP APCH - GFS
▲ NA * Circling not authorized E of Rwy 04-22.

MISSED APPROACH: Climbing left turn to 1300 direct EJOSO and hold.

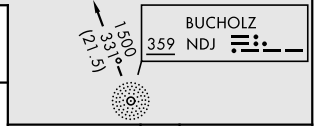
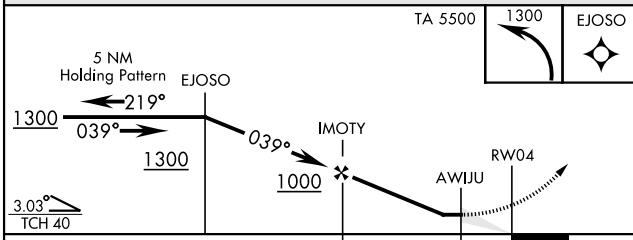
AWOS 119.0	BUCHHOLZ TOWER ★ 126.2 360.2	ROI RADIO 118.8	CTAF 118.1
----------------------	--	---------------------------	----------------------

Procedure not authorized at night except by prior arrangement for runway lights.

Obtain local altimeter setting on CTAF. When not received, use Bucholz AAF altimeter setting. Dyess Advisory 118.1.

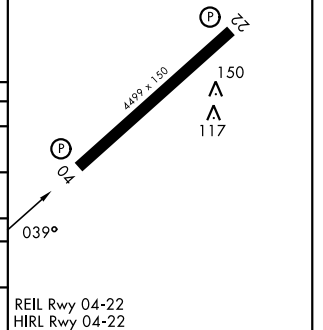


NOT FOR CIVIL USE



ELEV	14	TDZE	14
------	----	------	----

CATEGORY	A	B	C	D
RNAV MDA	420-1	406 (500-1)	420-1¼ 406 (500-1¼)	NOT AUTHORIZED
CIRCLING *	580-1	566 (600-1)	580-1½ 566 (600-1½)	NOT AUTHORIZED
BUCHHOLZ AAF ALTIMETER SETTING MINIMUMS				
RNAV MDA	520-1	506 (600-1)	520-1½ 506 (600-1½)	NOT AUTHORIZED
CIRCLING *	680-1	666 (700-1)	680-1¾ 666 (700-1¾)	NOT AUTHORIZED



KWAJALEIN USAKA, MARSHALL I

09°24'N-167°28'E

DYESS AAF (PKRO)

Orig

RNAV (GPS) RWY 04

PAC, 31 OCT 2024 to 26 DEC 2024

PAC, 31 OCT 2024 to 26 DEC 2024