

COPTER RNAV (GPS) RWY 17

| | | |
|----------|-----------|------|
| APCH CRS | Rwy Idg | 2005 |
| 175° | TDZE | 1091 |
| | Arpt Elev | 1091 |

[USA]

MULDROW AHP (KHMY)

RNP APCH - GFS

▼ Obtain local altimeter setting on CTAF; when not received, use University of Oklahoma Westheimer altimeter setting minimums.
 ▲ NA

MISSED APPROACH: Climbing left turn to 3000 direct IMIME and hold.

OKE CITY APP CON
124.2 336.4

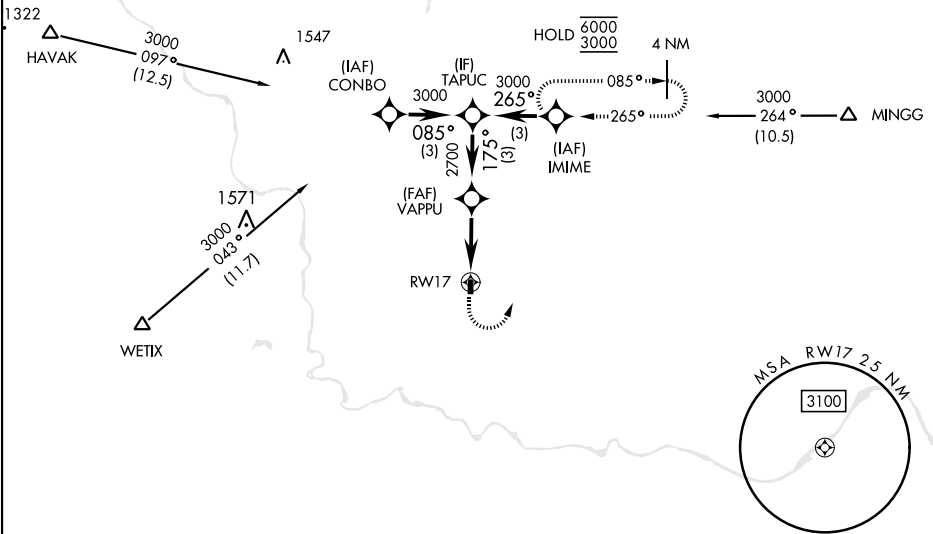
MULDROW OPS (Advisory service only)
46.9 139.425 227.2 (CTAF)

Limit all segments airspeed to 90 KIAS.

Procedure not authorized at night.

Trees 1134' MSL, 364' from threshold.

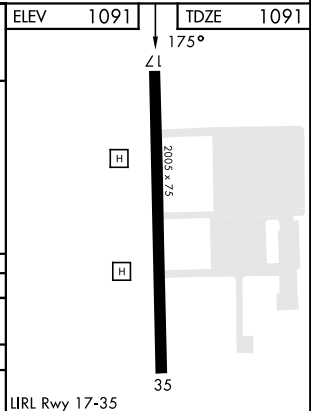
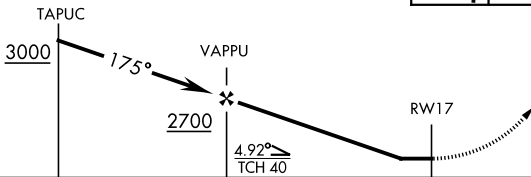
Visual segment - Obstacles.



SC-1, 28 NOV 2024 to 26 DEC 2024

SC-1, 28 NOV 2024 to 26 DEC 2024

| | | | | | |
|------|-------|------|------|------|------|
| 3000 | IMIME | ELEV | 1091 | TDZE | 1091 |
|------|-------|------|------|------|------|



| | | |
|--|--------|-------------|
| CATEGORY | COPTER | |
| LNAV MDA | 1660-1 | 569 (600-1) |
| UNIVERSITY OF OKLAHOMA WESTHEIMER ALTIMETER SETTING MINIMUMS | | |
| LNAV MDA | 1720-1 | 629 (700-1) |

LURL Rwy 17-35

COPTER RNAV (GPS) RWY 17