

TONOPAH, NEVADA

# VOR/DME or TACAN RWY 14

VORTAC TQQ <b>113.0</b> Chan <b>77</b>	APCH CRS <b>145°</b>	Rwy Ldg THRE <b>12,001</b> <b>5473</b> Arprt Elev <b>5550</b>
--	-------------------------	--

AL-3188 [USAF]

TONOPAH TEST RANGE (KTNX)

▼ \* When ALS inop, increase CAT AB vis to 1 mile, CAT CDE vis to 1 3/8 miles.  
 \*\* Circling not authorized W of Rwy 32.

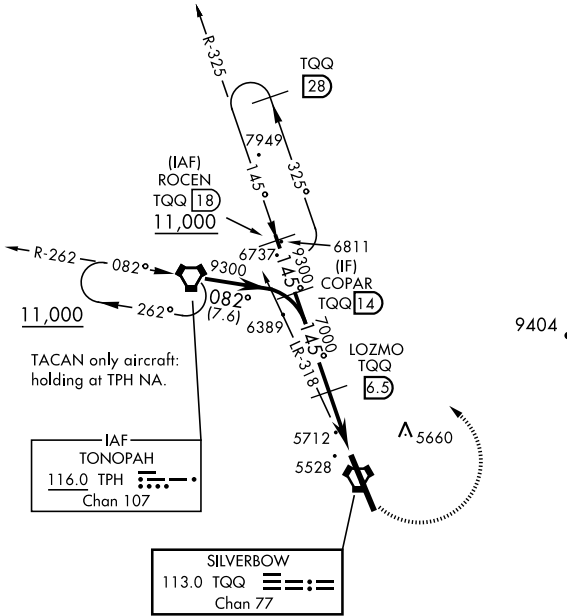


MISSED APPROACH: Turn left climbing to 11,000 via TQQ R-325 to ROCEN and hold, continue climb-in-hold to 11,000.

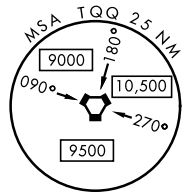
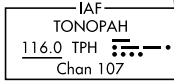
AWOS <b>113.0</b>	NELLIS CONTROL <b>119.35 254.4</b>	SILVERBOW TOWER* <b>124.75 257.95</b>	GND CON <b>127.25 335.5</b>
----------------------	---------------------------------------	--	--------------------------------

CAUTION: High terrain 3 NM W of Rwy. Unlit terrain 5558' MSL, 200' prior to Rwy 32 threshold, 200' left of centerline.

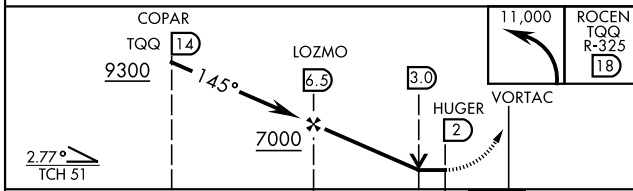
When VGSi inop, procedure NA at night.  
 USAF ONLY: When Rwy 14 VGSi inop, straight-in Rwy 14 authorized at night with MAJCOM A3 approval.  
 CAUTION: When Rwy 32 VGSi inop, circling to Rwy 32 NA at night.



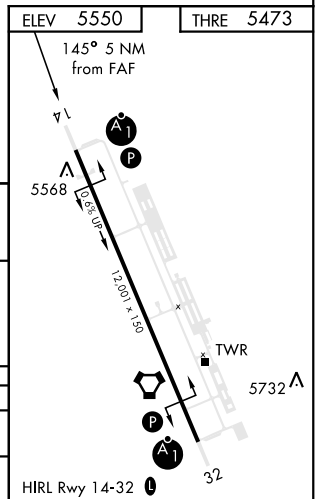
TACAN only aircraft:  
holding at TPH NA.



EMERG SAFE ALT 100 NM 16,600



CATEGORY	A	B	C	D	E
S-14 *	5980-1/2 507 (500-1/2)		5980-1 507 (500-1)		
CIRCLING**	6040-1 490 (500-1)		6040-1 1/2 490 (500-1 1/2)		6100-2 550 (600-2)



TONOPAH, NEVADA  
 Amdt 3 09JAN14

37°47'N - 116°47'W

TONOPAH TEST RANGE (KTNX)

# VOR/DME or TACAN RWY 14

SW-4, 28 NOV 2024 to 26 DEC 2024

SW-4, 28 NOV 2024 to 26 DEC 2024