

# VOR/DME or TACAN RWY 32

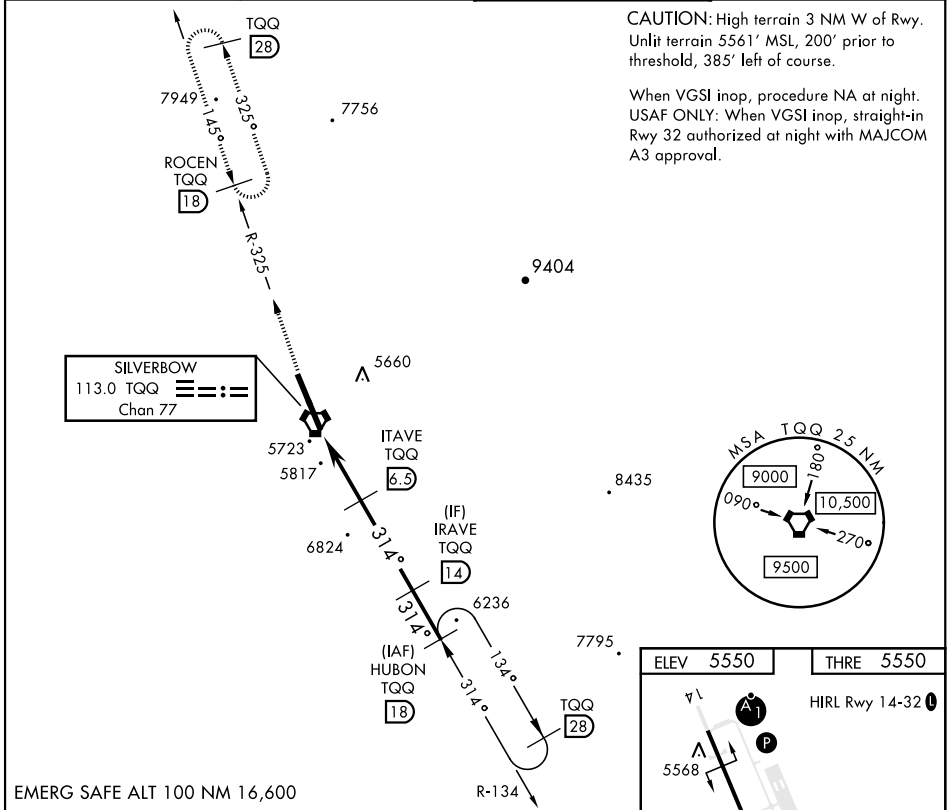
VORTAC TQQ <b>113.0</b> Chan <b>77</b>	APCH CRS <b>314°</b>	Rwy ldg <b>12,001</b> THRE <b>5550</b> Arpt Elev <b>5550</b>
--	-------------------------	--

AL-3188 [USAF]

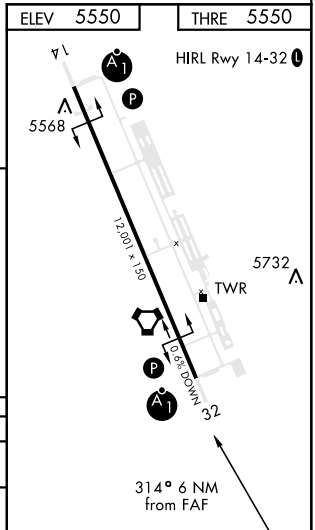
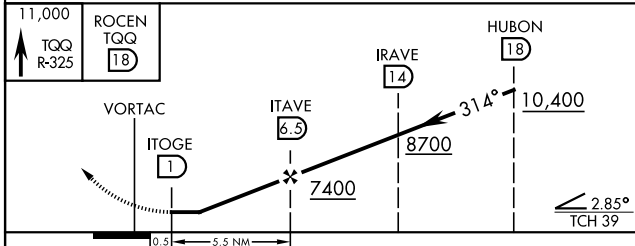
TONOPAH TEST RANGE (KTNX)

<p><b>▼</b> * When ALS inop, increase CAT CDE vis to 1½ miles. ** Circling not authorized W of Rwy 14-32</p>	<p>ALSF-1</p> 	<p>MISSED APPROACH: Climb to 11,000 via TQQ VORTAC R-325 to ROCEN and hold, continue climb in hold to 11,000.</p>
--	---	---

AWOS <b>113.0</b>	NELLIS CONTROL <b>119.35 254.4</b>	SILVERBOW TOWER* <b>124.75 257.95</b>	GND CON <b>127.25 335.5</b>
----------------------	---------------------------------------	--	--------------------------------



EMERG SAFE ALT 100 NM 16,600



CATEGORY	A	B	C	D	E
S-32 *	6080-1		530	(600-1)	
<b>☐</b> CIRCLING **	6080-1	530 (600-1)	6080-1½ 530 (600-1½)	6100-2	550 (600-2)

# VOR/DME or TACAN RWY 32

SW-4, 28 NOV 2024 to 26 DEC 2024

SW-4, 28 NOV 2024 to 26 DEC 2024