

WAAS CH <b>58239</b> <b>W04A</b>	APP CRS <b>051°</b>	Rwy Idg TDZE Apt Elev	<b>5001</b> <b>693</b> <b>720</b>
--	------------------------	-----------------------------	---

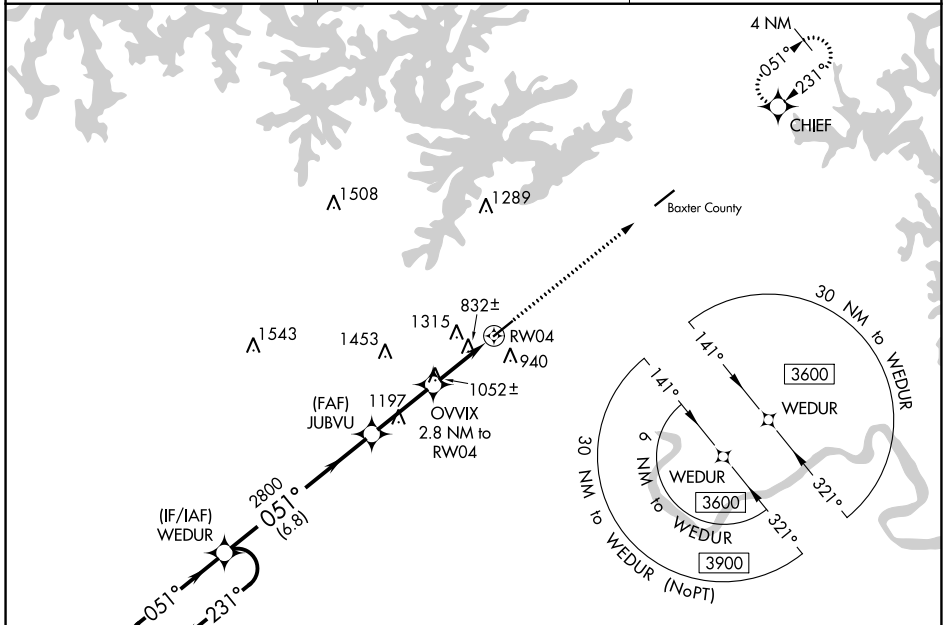
# RNAV (GPS) RWY 4

MARION COUNTY RGNL (FLP)

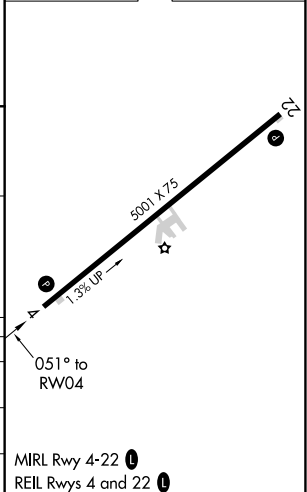
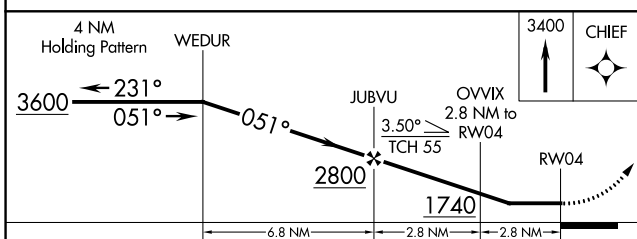
**▼** DME/DME RNP-0.3 NA. Procedure NA at night.  
**▲** Rwy 4 helicopter visibility reduction below 1 SM NA.  
 Circling NA northwest of Rwy 4-22.

MISSED APPROACH: Climb to 3400 direct CHIEF and hold.

AWOS-3PT <b>132.075</b>	MEMPHIS CENTER <b>126.85 281.55</b>	UNICOM <b>123.0</b> (CTAF) <b>📞</b>
----------------------------	--	--



ELEV 720	TDZE 693
----------	----------



CATEGORY	A	B	C	D
LP MDA	1100-1	407 (400-1)	1100-1 $\frac{3}{8}$ 407 (400-1 $\frac{3}{8}$ )	NA
LNAV MDA	1500-1 807 (800-1)	1500-1 $\frac{1}{4}$ 807 (800-1 $\frac{1}{4}$ )	1500-2 $\frac{1}{2}$ 807 (800-2 $\frac{1}{2}$ )	NA
<b>C</b> CIRCLING	1500-1 780 (800-1)	1500-1 $\frac{1}{4}$ 780 (800-1 $\frac{1}{4}$ )	1500-2 $\frac{1}{2}$ 780 (800-2 $\frac{1}{2}$ )	NA

MIRL Rwy 4-22 **📞**  
 REIL Rws 4 and 22 **📞**

SC-1, 28 NOV 2024 to 26 DEC 2024

SC-1, 28 NOV 2024 to 26 DEC 2024