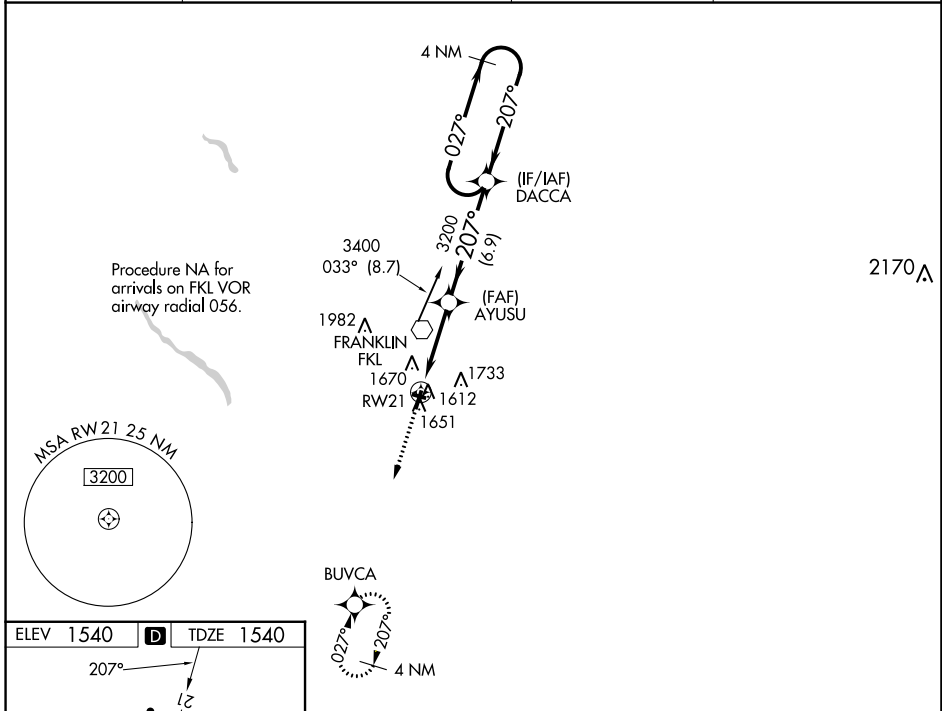


WAAS CH <b>77501</b> <b>W21A</b>	APP CRS <b>207°</b>	Rwy Idg TDZE Apt Elev	<b>5200</b> <b>1540</b> <b>1540</b>
--	------------------------	-----------------------------	---

# RNAV (GPS) RWY 21

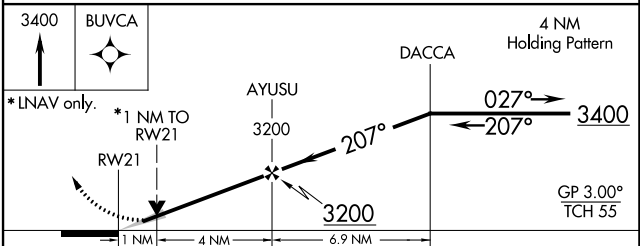
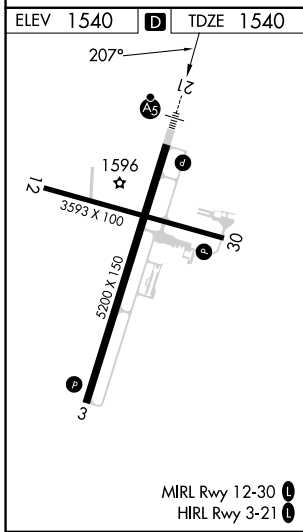
VENANGO RGNL (F'KL)

RNP APCH.		MALSR	MISSED APPROACH: Climb to 3400 direct BUVCA and hold.
<p><b>⚠</b> For uncompensated Baro-VNAV systems, LNAV/VNAV NA below -18°C (0°F) or above 45°C (114°F). Circling Rwy 12 NA at night. For inop ALS, increase LPV all Cats visibility to 7/8 SM and LNAV Cats C/D visibility to 1 SM.</p>			
AWOS-3PT <b>118.175</b>	YOUNGSTOWN APP CON * <b>126.25 322.3</b>	CLNC DEL <b>126.25</b>	UNICOM <b>122.7</b> (CTAF)



NE-4, 28 NOV 2024 to 26 DEC 2024

NE-4, 28 NOV 2024 to 26 DEC 2024



CATEGORY	A	B	C	D
LPV DA		1803-1/2	263 (300-1/2)	
LNAV/VNAV DA		1901-3/4	361 (400-3/4)	
LNAV MDA	1900-1/2	360 (400-1/2)	1900-5/8	360 (400-5/8)
CIRCLING	1960-1 1/4 420 (500-1 1/4)	2000-1 1/4 460 (500-1 1/4)	2040-1 1/2 500 (500-1 1/2)	2100-2 560 (600-2)